

Matsuyama's major boost for golf • New life at Pontiac Elks

ILLINOIS GOLFER

DIGITAL EDITION

APRIL 2021



Pick your playground

Competitive circuits abound across the state

The Buzz

New clubhouses are in season

The traditional reason to build a new clubhouse in the Chicago area is because a fire consumed the old one.

Four new clubhouses are opening at public courses in the Chicago area this year and next, and only one is because of a fire – decades back, in fact. All four are being built by municipal entities.

That clubhouse is the one pictured in a rendering below, and it will be prominent yet fit naturally into the landscape at The Preserve at Oak Meadows.

Conceived by **Daniel Wohlfeil** Design, the modernistic 18,000-square foot building is nothing like the old 40,000-square foot Tudor clubhouse that dated to the course's palmy days as Elmhurst Country Club. A lightning strike and out-of-control fire in 2009 spelled the end of that landmark, and the space sat vacant

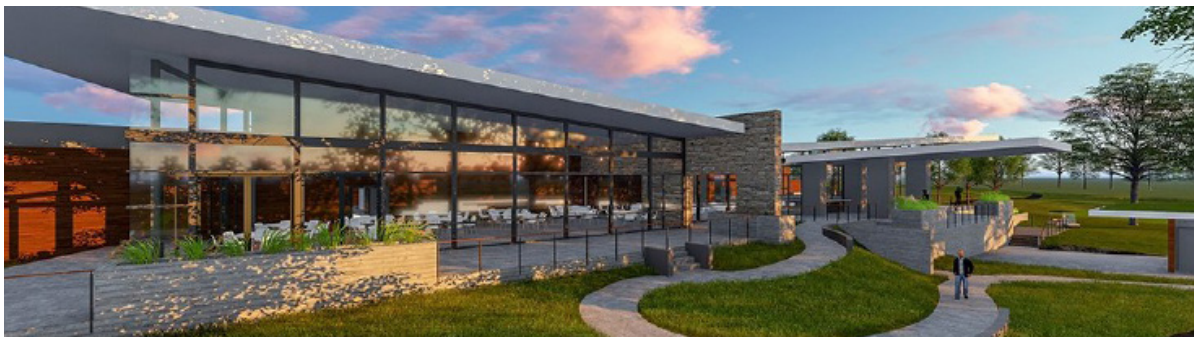
for years while the DuPage County Forest Preserve District mulled how to replace the structure – after the major remodeling of the course itself.

The result is a stylish \$12.6 million building. (The cost includes nearby solar panels for the cart fleet.)

Also under construction or just opening in the area:

- Fox Run, part of a \$10 million program including a new maintenance facility.
- Settler's Hill, in conjunction with a remodeling of the golf course. The new building, replacing a dairy barn that preceded the building of the course on a landfill, will open when the revamped course does next spring.

• Sportsman's – recently renamed Heritage Oaks – debuts a new clubhouse along with the **Rick Jacobson** remodeling of their 27-hole complex.



DuPage County Forest Preserve District / Daniel Wohlfeil Design

GLASSY The new clubhouse at The Preserve at Oak Meadows is best described as modern Prairie style.

THE COVER Logos of the five groups with competitive golf for players illustrate our April cover.

IN THIS ISSUE

NEWS

PREVIEW – WILL THE BOOM CONTINUE?	4
2020 IN THE REAR-VIEW MIRROR	7
A LEAGUE OF YOUR OWN	9
TEN REMAIN IN HALL OF FAME VOTING	11

OPINION

GRILL ROOM: MATSUYAMA COMES UP BIG	3
------------------------------------	---

DEPARTMENTS

AROUND ILLINOIS: PONTIAC ELKS SOLD	12
IG TOURNAMENT CENTRAL	14
THE COMPLETE 2021 GOLF SCHEDULE	
THE DIRECTORY	16
TOUR GUIDE	25

ILLINOIS GOLFER

APRIL 30, 2021 · DIGITAL EDITION
VOL. 7, NO. 2 · ISSUE 49

PUBLISHED MONTHLY IN SEASON,
WITH OCCASIONAL SPECIAL ISSUES

PUBLISHER & EDITOR **TIM CRONIN**
TRAVEL EXPERT **LEN ZIEHM**

JOIN US ONLINE AT WWW.ILLINOISGOLFER.NET
E-MAIL US AT ILLINOISGOLFER@EARTHLINK.NET
CALL US AT (708) 638-1164

FOLLOW US ON TWITTER: @ILLINOISGOLFER

DISPLAY / CLASSIFIED ADVERTISING:
CALL (708) 638-1164 FOR PARTICULARS.

ILLINOIS GOLFER ASSUMES NO RESPONSIBILITY FOR UNSOLICITED MATERIALS OR CLAIMS OF ADVERTISERS. CAVEAT EMPTOR.

© 2021 ILLINOIS GOLFER LLC, A UNIT OF CRONIN MULTIMEDIA



The Grill Room by Tim Cronin

Matsuyama's victory as major as it gets

This month's Masters was not the most exciting tournament held at the course down the street from the Hooters on Washington Road. Once Hideki Matsuyama took the lead from Justin Rose on Saturday afternoon, he ran from the pack and kept the lead to the finish. Only the aborted challenge of Xander Schauffele and the emergence of Will Zalatoris, the flagstick-think rookie whose lack of status on the PGA Tour exposes the circuit's managerial sloth, kept millions from dozing off on a lazy Sunday afternoon in Augusta.

In Japan, however, viewers pulled an all-night shift to watch Matsuyama win. When the final putt dropped a little after 7 a.m. on Monday, Tokyo Broadcasting's breaking-news bell rang, and a nation filled with golf nuts celebrated.

There will likely be many more golf nuts, and soon. Just as the rise of Korean golf came about thanks to Si Re Pak's playoff victory in the 1998 U.S. Women's Open at Blackwolf Run, this could turn out to be the catalyst for growth of golf in Japan and throughout Asia. Matsuyama is not just a fine golfer to his countrymen, he's a hero, and the green jacket he'll sport for the next year is a symbol of what can be achieved.

Pak won five majors, including the LPGA Championship later in 1998, and within a few years, the LPGA was filled with Korean-born golfers who so dominated the circuit it was hard to find an American on the first page of the leader board at times.



Illinois Golfer Archive

EXTRA! Hideki Matsuyama's Masters victory was front-page news in Japanese newspapers.

Pak retired a few years ago, but as a World Golf Hall of Famer, with a legacy that will last generations.

Matsuyama, at 29, is nowhere near retirement. Nor was his victory a total surprise. It

was his sixth victory on the PGA Tour – the first coming at the 2014 Memorial – and 15th worldwide. It might have been the 16th, as he led the 2020 Players Championship after one round with a sparkling 63, tying the course record on Pete Dye's treacherous playground, only to see the tournament abruptly halted by the rapid spread of COVID-19 that week in Florida.

He had been fifth in the 2015 Masters. He's finished fourth in the PGA (2016), second in the U.S. Open (2017), and sixth in the British Open (2013). A victory in a major was all but inevitable for the stylish player, and more can be expected.

How soon? A player who wins at Augusta National can win anywhere, but this year's major sites would seem to set up well for him.

Kiawah Island, site of the upcoming PGA Championship, is open and affected by wind as much as a British seaside links. Torrey Pines, host of the U.S. Open, would work for Matsuyama as well. Then there's Royal St. George's, the year-delayed host of the British Open. He should be in the hunt there also. As will the usual suspects, which will make for three more exciting weeks of championship golf.

The really intriguing question regards Zalatoris. He played himself into the Masters with a tie for sixth in last year's U.S. Open, and now he's in the world top 50. Imagine if his first victory is a major championship. He'd be the new Lee Trevino, only without the red socks.

2021 SEASON PREVIEW

A big year, or regression?*Course operators hope last year's rise in play repeats*

BY TIM CRONIN

Golf is about two things: Enjoying the experience and putting numbers in boxes. Often, the torture involved in creating the latter detracts from the joy of the former.

The experience can be in spectating – as in watching one of the six top tournaments, both pro and amateur, in and near the state this year, and about which more later – or in playing.

In 2020, almost everyone was delighted to be able to pick up a pencil after picking up a club. The month-plus when golf wasn't allowed to be played in Illinois at the onset of the COVID-19 pandemic was the springboard for a booming summer that continued deep into the fall.

These numbers went on the National Golf Foundation board, as tallied by Golf Datatech, at the end of the year:

- Nationally, a 14 percent increase in rounds played from 2019 even with the shutdown time factored in;

- A half-million new players, the biggest increase since 2003, and another 5.5 million players returning to the game;

- Total participation up 8 percent from 2019, to 36.9 million Americans playing at least once.

THE YEAR'S BIG SIX IN THE NEIGHBORHOOD

3rd Evans Scholars Invitational**May 27-30 • The Glen Club, Glenview • www.esinvitational.com****25th Arnold Palmer Cup****June 11-13 • Rich Harvest Farms, Sugar Grove • www.arnoldpalmercup.com****50th John Deere Classic****July 8-11 • TPC Deere Run, Silvis • CBS / Golf • www.johndeereclassic.com****121st Women's Western Amateur****July 19-24 • Park Ridge CC, Park Ridge • www.womenswesternamateur.com****119th Western Amateur****July 26-31 • Glen View Club, Golf • www.thewesternamateur.com****43th Ryder Cup****Sept. 24-26 • Whistling Straits, Haven, Wis. • NBC / Golf • www.rydercup.com**

In Illinois, rounds were up 15.4 percent in 2020 compared to 2019, and Indiana, which never closed courses, was up an astounding 23.5 percent. Wisconsin, closed for a shorter period than Illinois, jumped 19.9 percent.

Nationally, the only states where play was down were in tourism-dependent Hawaii (down 32.7 percent), Nevada (down 3.6 percent) and South Carolina (down 0.2 percent).

Overall numbers went up at both public courses (a 12.4 percent gain nationally) and at private clubs (up 19.9 percent nationally). Equipment sales got a big boost in summer from newcomers. Manufacturers with equipment piling up in warehouses were able to move it to stores, and they into the hands of eager golfers, by mid-year.

The obvious question: Can it continue?

The unsure answer: To some degree, unless course owners get greedy and, in trying to make up for the lost six weeks of 2020, raise prices to make up for it.

Some courses have boosted rates, thinking the full tee sheets of July through September will continue no matter what. That's likely not the smartest move. Those owners know golf was the desert island of recreational sport in 2020. There was next to nothing else. Tennis courts and basketball courts were mostly closed. Youth sports, for which parents act as coaches, fans and drivers, were cut back to nearly nothing. Soccer moms and dads could thus play golf, and sometimes the kids did as well.

This year, there will be competition for the dollar. Second-year players especially will have to be motivated to play – and to improve.

That motivation might be internal. Golf is fun even when you're struggling, if you can see improvement. It might be external. The occasion-

al discount rate creates interest in those on the fence, wondering how much they'll play.

The question of how much fans will watch is also up in the air. The idea of a full house, whatever that is in an outdoor sport, is unlikely.

The Masters had about 5,000 fans on hand each day, with no grandstands, which was better than 2020's November playing with only members and wives or girlfriends at Augusta National. But while the Masters can whether a financial hit from a smaller gallery given its presumed deep reserves, other operations can't.

The first of ILLINOIS GOLFER's Big Six this year is the Evans Scholars Invitational, the Korn Ferry Tour stop run by the Western Golf Association. It returns to The Glen Club, around the corner from the WGA's new headquarters building, after last year's edition at Chicago Highlands. The May 27-30 dates coincide with Memorial Day weekend, as was the case for the 2019 inaugural.

The main attraction will likely be Northbrook's Nick Hardy, the Illinois grad who has contended on the KFT circuit and had some noise when he's made a PGA Tour field. He will likely be on the big tour next year, so here's a chance to see him now.

Hardy is worthy of a large fan base, and at the Evans, spectators will be able to register through Servpro, a Glenview company, which is picking up the tab for attendees. If there's a limit on crowd size, it hasn't been announced, but KFT galleries aren't generally large anyway.

The second weekend of note, the June 11-13 Arnold Palmer Cup at Rich Harvest Farms, is the annual gathering of college notables in a Walker Cup-Ryder Cup team format, with the U.S. playing Europe in both male and female competition. It was played at Rich Harvest in 2015 – the last

time Arnie attended the bash he created in 1997 – which means Jerry Rich's backyard digs will be the second course to hold the Palmer Cup twice, joining the King's own Bay Hill Club and Lodge.

Alas, the 25th Palmer Cup won't have spectators, and may not even have volunteers. The safety of the teams was the first consideration, and the decision was made when vaccinations were just beginning.

The first full week of July brings the 50th John Deere Classic to TPC Deere Run in Silvis, a year after it was scheduled to be played. The Deere was canceled last year because Illinois was in a safety phase that allowed no spectators, and it essentially cost the tournament less money to not play than to play.

The good news last year was the Birdies for Charity operation continued, and raised over \$12 million for the hundreds of charities in the Quad Cities metro area, a remarkable achievement.

The good news this year is the return of the tournament, complete with most of the 50th anniversary hoopla that was to take place last year. That includes a book, written by ace QC journalist Craig DeVrieze, who goes back to the days when it was the Quad Cities Open. It will be a keeper.

The number of spectators will be determined closer to the tournament, which begins with the July 7 pro-am. Tickets will be digital and will have to be bought online, either directly from JohnDeereClassic.com or through Ticketmaster, and can be transferred.

July's waning days bring the two oldest American amateur championships this side of the USGA to the Chicago area. The Women's Western Amateur comes first, July 19-24 at Park Ridge Country Club. No spectators were allowed at Prestwick Country Club last year, but it's ex-

pected fans will be permitted, at least in limited numbers, this year. The same is expected at the Western Amateur on July 26-31, when it returns to the site of its first playing, the Glen View Club in Golf, the little town named after the railroad stop where the WGA long had its headquarters.

Sarah Shipley and Pierceson Coody, who won at Crooked Stick in Carmel, Ind., before a handful of members, are expected to return to defend their respective titles.

The last of our Big Six is the biggest golf competition not a major, but major in its way: the Ryder Cup. A novelty for spectators and a walk-over for the American team until Seve Ballesteros arrived on the scene – thanks to Jack Nicklaus' suggestion to include mainland Europeans on the Great Britain and Ireland squad – the scrap for the little trophy with the statue of Abe Mitchell atop it is the most rabidly attended competition in the game.

Will it be this year at Whistling Straits? That's the hope of the hosting Kohler Company, as well as the PGA of America, as the quadrennial appearance on an American course is a financial windfall for it. There's been no update since Feb. 23, when the Ryder Cup ticket website announced "We are carefully monitoring the evolving situation ... and will communicate any relevant updates as soon as details are finalized."

Since the first ball isn't struck in anger until Sept. 24, there's plenty of time for things to ease. Given both the rate of vaccination and Wisconsin's lax record regarding COVID-19 precautions, it would be a surprise not to see a full house of 45,000 or so fans. The question is how many will be allowed in from Europe, where lockdowns remain common. To have only a small contingent from across the pond would be unfortunate.



LoopNet

BRASSIE'S LAST DAYS? The Chesterton, Ind., layout is for sale for \$2.75 million. Bring your own mowers.

So you want to buy a golf course?

Not everything in the golf business is rosy. Courses continue to go on sale in what remains a buyer's market. **Pontiac Elks**, for instance, was recently bought by the city of Pontiac (more on page 12) for \$500,000, well under its value.

In the last days of April, word came that **The Hawk Country Club**, a 95-acre complex in St. Charles, is on the market. The owners want \$1.6 million for the private course and the 12,000-square-foot clubhouse.

In central Illinois, **Sunset Hills Golf Course** in Pekin is for sale, with the owners asking \$1.75 million for the 130-acre operation and 7,400-square-foot clubhouse located smack in a residential development.

To the west, **Kewanee Dunes Golf Course**, a venerable 18-hole course just outside of Kewanee, is reportedly under contract after the owners marketed it at \$750,000. Now word yet if they

got their price or sold for less, the recent trend.

In Indiana, **The Brassie**, a 1990s layout in Chesterton, Ind., is closed and for sale. If you have \$2.75 million, jump on it. If you have less, you may still be able to pick it up, but the equipment previously used to maintain the golf course has been sold separately, so be ready to spend on a set of mowers for greens and fairways, or rent some sheep.

If that's too pricey for you, go south a few miles to U.S. 30, east of the I-65 interchange, and you'll find **Ringo's Golf Center**, a pro shop and driving range. That's for sale for \$750,000, not including inventory or the name of the business.

Farther south in Indiana, in little Monticello, a few miles from the reopened Indiana Beach amusement park, is **Hollow Acres**, a barebones 9-hole course with miniature golf and a snack bar. That's on offer for \$445,000. — *Tim Cronin*

2020 IN REVIEW

Achievement in shadow

Pandemic-era winners earned honor in relative silence

BY TIM CRONIN

The photograph at right, Illinois Open champion Bryce Emory addressing the gallery that watched him win at White Eagle, is the exception to the general rule in 2020. Because of the COVID-19 coronavirus pandemic, crowds were not allowed to gather. Prudence meant wearing a mask and staying six feet apart wherever you went – strictures which continue in these early weeks of the vaccination of the world.

Golf became something of an exception. It was the first sport to return, built largely upon the vast acreage on which the game is played. A sport of fellowship is nonetheless played in solitary fashion, caddies aside.

A hole was ripped in the schedule and only partially repaired. The Masters was moved to November. The British Open wasn't played at all, the R&A taking their pandemic insurance money and shifting venues back a year.

Locally, the CDGA cancelled most of its championships because it couldn't guarantee being able to conduct qualifying rounds. The Illinois PGA maneuvered its four major championships, including the Illinois Open, to later in the



Tim Cronin / Illinois Golfer

EMORY AND HIS FANS Bryce Emory addresses the gallery – the largest in Illinois golf in 2020 – after winning the Illinois Open at White Eagle Golf Club.

calendar and managed to find a way for qualifying rounds.

Emory and his peers had a gallery of perhaps 300 when everyone at White Eagle was tallied. There were that many at Olympia Fields Country Club for the BMW Championship only when the television crew was added in. Otherwise, that grand affair, which culminated in the puissant putting of first world No. 1 Dustin Johnson and then world No. 2 Jon Rahm, was seen in person by a handful of marshals and WGA and PGA Tour staffers.

What they saw was one of the most dramatic punches and counterpunches in golf history. Johnson, needing to make a 43-footer to tie Rahm at 4-under-par 276 on the 18th green of Olympia's treacherous North Course, sank it, forcing sudden-death.

A dozen or so minutes later, Rahm topped Johnson and brought back memories of Jerry Barber by sinking a sidehill-downhill 66-foot 5-inch snake for a birdie to – once Johnson couldn't drop a ho-hum 33-footer – capture the BMW, ye olde Western Open, and all the glory that went with it.

It was the type of finish that in another era might have seen the victor carried off the green by the gallery. Rahm got a round of applause from the few dozen on hand.

Hideki Matsuyama, incidentally, tied for third with Joaquin Niemann. They barely got a pat on the back.

All major national junior tournaments were canceled, including the Western Junior and Women's Western Junior. They'll be back this year. The Illinois High School Association wiped out golf and several other fall sports – football was moved to spring – which denied Ben Sluzas of Lockport Township a chance at a third straight individual

CHAMPIONS OF 2020

BMW Championship / Western Open –

Jon Rahm

Western Amateur – **Pierceson Coody**

Women's Western Amateur –

Sarah Shipley

Illinois Open – **Bryce Emory**

Illinois Senior Open – **David Pagelow**

Illinois PGA – **Mike Small**

Illinois PGA Match Play –

Jonathan Duppler

Illinois Players – **Curtis Malm**

Illinois Junior – **Ben Sluzas**

Illinois Junior Girls – **Shannyn Vogler**

crown, but the NIU-bound Sluzas made the most of his one chance at glory, winning the Illinois Junior, conducted by the Illinois Junior Golf Association at Makray Memorial in Barrington, in his final opportunity.

Downstate, Shannyn Vogler of Moline won the Illinois Junior Girls championship at Hickory Point in Forsyth, repeating her success of 2019 with a five-stroke victory over Sunbi Kwon of Orland Park.

Most of the other competition was within Illinois PGA ranks. Mike Small won his 13th Illinois PGA Championship with a 13-under-par showing on Medinah No. 1.

Curtis Malm of White Eagle collected his fourth state major by winning the Illinois Players Championship at Conway Farms.

And Jonathan Duppler took advantage of the rearranged schedule to capture the Illinois PGA

Match Play crown on his home turf of Elgin Country Club.

One thing that didn't happen last year was the World Long Drive Championship. The plan was to bring the championship to Cog Hill last September, part of a series of appearances of the big hitters in the next few years.

But about the time the long drive group was making the deal, the pandemic hit and put things on hold. Owner Golf Channel pulled out and put the long drive operation up for sale, the harbinger of other major cutbacks at the network.

Cog Hill had planned to clear room on the southeast side of Archer Ave. for a 750-yard long driving area, long enough to hold the most outlandish drives.

The long drivers have since regrouped and formed Pro Long Drive, but Cog Hill is not in the picture.

Along with several other renovations (see The Buzz, page 2), a pair of major construction projects for prominent private clubs were announced. Medinah hired a group headed by Geoff Ogilvy to redo (again) its famed No. 3 course, while Olympia Fields brought on Andy Staples to work over the South Course first, and eventually the North Course. The South re-do, including a massive tree removal, will cost \$4 million.

Deaths last year included teacher and long-drive champion **Marty Joyce**, 68, on Jan. 17; Milwaukee-based golf writer **Dan Manoyan**, 69, on April 20; teacher and trick-shot whiz **Peter Longo**, on May 28; and Mistwood owner **Jim McWethy**, 76, on June 22. All brought joy to the world and are dearly missed.

Finally, in the upset of the century, the membership of Chicago Golf Club voted to add air-conditioning to the entire clubhouse. Progress!

ILLINOIS GOLFER COVER STORY

A league of your own

There are plenty of local options for the competitive player

BY TIM CRONIN

The majority of competition coverage in ILLINOIS GOLFER concerns the doings of the pros when they swoop through Illinois, the local professional scene, and the play of top amateurs in the CDGA's championships.

That barely scratches the surface. There's a universe of adult competition beyond that, with several organizations offering tournament play among amateurs with both low and medium handicaps. Most every local player started in it, or on a similar level elsewhere. For those new to the scene, here's a primer on what's what, focusing on the Chicago area, where most of our readers – all of whom are potential or active players – are.

One group isn't really a group, but is as established as any other. It's nicknamed the Manure Tour, so called because many of the tournaments on the circuit are downstate.

This year's Manure Tour teed off, as it generally does, with the Will County Amateur at Balmoral Woods. This year's Will County Am almost made national headlines, as CBS football analyst Tony Romo, a past WCA champion, was in the lead after the first round, but Romo was sacked for a 77 in the final round and finished tied

for eighth, six strokes back. Bennett Cotton took the title with a score of 4-under-par 140, beating Dominic Scaletta by two strokes, and thus the won right to wear the Brown Jacket.

Other Manure Tour stops include the Joliet Amateur at Wedgewood on June 5-6, the Pine Hills Invitational on June 12-13, and Blackberry Amateur at Blackberry Oaks on June 26-27, and the North Shore Amateur at Sunset Valley on July 28-29.

There aren't point standings per se, but many of the usual suspects play in these and other weekend battles each summer, and have a general idea of where they rank. And most, if not all, of the regular contenders also show up in the CDGA Amateur and Mid-Amateur and the Illinois Amateur. The Manure Tour is a great place for the elite to hone their skills under pressure.

Most all the Manure Tourers came up through the local ranks, self-governed groups that have extensive tournament schedules. The three notable Chicagoland groups are NIMAGA, the Weekly Challenge Golf Tour and the new one, the Chicago Golf Tour.

The CGT is different from the other two in that tournaments aren't single day come-all-ye events, but conducted over a span – usually two weeks – with scores tallied as they go. A Chicago

go Golf Tour member must play with at least one other CGT member for their round to count and declare it a tournament round before teeing off.

"I really wanted something for the common man looking to play competitive golf," said CGT founder Tom Tassone. "The 5-to-20 handicapper. I knew of NIMAGA as well as the CDGA. They're geared to lower handicappers. But there really wasn't anything open to the common amateur golfer."

The Chicago Golf Tour has South, West and North divisions, each with a slate of competitions. Tassone started with the South Side Tour in 2019, had 107 people sign up, saw it grow to 137 players last year, and had added the other brackets this year. When entries closed in mid-March, Tassone had 492 players across the three zones.

"The first year was all word of mouth, and then we built the website."

Tassone closed entries for the year largely because it's complicated to all players to the computer program he uses once play begins.

"It gets a bit complicated once everything's done," he said. "There comes a point when you have to put a deadline in."

The flexibility in scheduling attracted some players. Oddly, the boom in golf play once courses were allowed to open last May 1 caused some

difficulty in his players getting tee times. That should be less of a problem this year.

He doesn't see a problem with the two-week time to play an official round, though some players could look at a weather forecast and try to pick a windless day, for instance.

"That went into our research," said Tassone, a 34-year-old operating engineer. "A lot of amateur tours have started to pop up. I would assume we've caught the eye of a lot of golfers. Flexibility in scheduling is by far our most attractive asset.

"We're definitely not a beer league," he said. "It's a mixture of a men's league and fun. There's a competitive nature to the Chicago Golf Tour."

Tassone, like others, has to deal with courses for tee times. In his case, he's sometimes found it easier to get a guarantee that players will be able to get on, but hasn't always been able to get a group rate, since his group isn't there together.

Like the others, the CGT plays on solid courses ranging from Mistwood to Harborside International to Pine Meadow to Highlands of Elgin.

NIMAGA – the Northern Illinois Men's Amateur Golf Association – was created in the winter of 1959-60, and is in its 62nd season of play.

It came about through necessity. In that era, the CDGA was strictly a private-club group, and all the public golfers had no organization to conduct tournaments since the demise of the Chicago Daily Fee Golf Association during the Great Depression. A group of solid public players led by Arthur "Ace" Ellis formed the group to run tournaments and raise funds to send a sextet of players to the 1960 U.S. Public Links Championship in Hawaii.

NIMAGA, partly because of publicity from local golf writers, was an almost instant success. The first one-day tournament, at the public Ever-

FOR MORE INFORMATION

CDGA	www.cdga.org
Chicago Golf Tour	www.chigolftour.com
Metropolitan Am GA	www.metga.org
NIMAGA	www.nimaga.org
Weekly Challenge	www.wcgt.com

green Golf Club, attracted about 40 players. After four tournaments, NIMAGA had raised \$3,000, enough to send the publinox players to Hawaii.

Some 200 players were members by the end of 1960, and the usual growing pains, including a handicap system – it was years before the CDGA allowed public players access to its system – and getting tournament sites were met and conquered.

NIMAGA helped create the Eskimo Open at Glenwoodie in 1963, and looked to the future in 1967 with the birth of the NIMAGA Junior Division. That grew to over 600 players before it was split off as the Illinois Junior Golf Association.

Today, NIMAGA runs a 19-tournament schedule from April to October, ranging from the NIMAGA Cup to a special tournament against a similar group from Milwaukee. Beginning this year, with the advent of the World Handicap System, handicaps are run through the CDGA. There's live scoring via Golf Genius, and everyone plays on the same day, just like a PGA Tour stop, with the exception of the match play tournament, when opponents agree on a time and place.

NIMAGA had no competition until Dr. James Griseto, a retired dentist and avid player, decided to drill down on an idea that had been in his craw for some time, creating a tournament series that would mix amateurs playing with handicaps along with what he called "non-amateurs" play-

ing for cash and prizes.

With that in mind, his Weekly Challenge Golf Tour was born in 1989 and is going strong in its 33rd season.

"Golf in this format, with fair competition, is truly a unique experience," according to the history on the WCGT website.

The Challenge Tour handicaps players based only on their tournament scores, but an outside handicap – CDGA or from another USGA-affiliated group – is needed for membership. Doc Griseto always worried about sandbaggers. He also came up with the "non-amateur" term, according to the WCGT, "to prevent the mistaken conclusion that only very good players can be professionals." (NIMAGA and the CGT, like most amateur tournaments, award only merchandise credits.)

In 2019, the last full year, seven players earned more the \$1,000 in cash or merchandise credits. In the WCGT's first 30 years, some \$25 million has been paid out.

There's also a notable group to mention south of I-80. The Metropolitan Amateur Golf Association is a regional group in the St. Louis area akin to the CDGA, conducting tournaments and running a handicap service, among other things. But it also runs a one-day tournament series more akin to NIMAGA and the WCGT. The MAGA's six-week Amateur Series starts May 3 at WingHaven Country Club, and will have five divisions, two for seniors and one for women, a first in 2021.

To its credit, the CDGA recently started what it calls Social Competitions, which it calls "casually competitive events open to all CDGA members, regardless of skill." That's further proof there's something for everyone who wants to tee it up with something on the line.

Ten Hall of Fame finalists announced

FROM IG NEWS SERVICES

And then there were 10. The Illinois Golf Hall of Fame Selection Committee cut a field of 27 candidates to 10 for this year's class on April 22, and now comes the hard work: Selecting this year's inductees from a field all worthy of induction. That chore comes May 25.

"We had outstanding nominees to choose from representing from many aspects of the game," said selection committee chair Tim Cronin.

The finalists:

• **Doug Bauman** – A dogged competitor who has won five state majors since arriving at Biltmore Country Club from Wisconsin in 1985. He captured two Illinois PGA Championships in succession in 1996 and 1997, but has made match play his specialty, with three Illinois PGA Match Play titles, four runner-up placings, and three more semifinal appearances.

• **Randy Kane** – Nicknamed "The Family Doctor" for his close attention to the turf quality of the Chicago District's courses, Kane has a doctorate in plant pathology from Cornell University and served as the CDGA's first director of turfgrass programs from 1985 through 2006. He was a leader in identifying problems and passing the solutions to some 400 clubs in the CDGA area.

• **Phil Kosin** – Founded and ran *Chicagoland Golf* from 1989 until his death in 2009. He added a website when digital applications blossomed. Concurrently, he produced and hosted the Chicagoland Golf radio show on WSCR-AM 670,

which continues today as The Scorecard show. He previously had worked for the original ILLINOIS GOLFER and several other golf publications, including *Golf Traveler*. He founded the Illinois Women's Open in 1995, which has since had his name attached to it, and the Chicago Friends of Golf, a charity endeavor.

• **Michael Miller** – Built the stature of the Illinois Section and area of golf in general over 20 years as the Illinois PGA's Executive Director. Miller helped create the Illinois PGA Foundation, attracted corporate sponsors and boosted the visibility of the Hall of Fame through exhibits at The Glen Club. In his time, the Section created the Youth Skills Challenge for the 2006 PGA Championship, today's Drive, Chip and Putt program.

• **Tim O'Neal** – Like mentor Bill Ogden before him, Tim O'Neal was been a mentor to many assistants in his career as professional at North Shore Country Club. Twenty-three of his assistants and students have become head professionals or directors of golf. Twice a Section professional of the year (Florida 1994, Illinois 2005), O'Neal served on the Illinois PGA and Foundation boards and is currently president of the Illinois PGA Foundation board.

• **Bruce Patterson** – A two-time Illinois PGA professional of the year (1993-96), Patterson was instrumental in creating the Illinois PGA Foundation. The longtime professional / director of golf at Butler National Golf Club spent a decade as president of the foundation, and was also the Section president in 1995-96, and recently a PGA regional director. Named the Illinois PGA teacher of the year in 2001. He earned PGA Master Pro-

fessional status with a thesis on hosting a PGA Tour tournament, the Western Open, at his club.

• **Gary Pinns** – the only person to win the Illinois Open five times, doing so across three decades, with the first title in 1978 as an amateur. He then turned professional and captured three more in the 1980s, and the last in 1990. Pinns was also All-ACC at Wake Forest for two years while the team's captain on a squad that included Gary Hallberg, Scott Hoch and Robert Wrenn.

• **Jerry Rich** – Rich has had an impact on golf far beyond what he expected when he decided to build a three-hole course behind his Sugar Grove estate. As his course expanded to 18 holes, his influence grew. Rich Harvest Farms has hosted the Solheim Cup, Western Amateur, Western Junior and the NCAA Championships. This year, it will host the Palmer Cup the second time. He also came up with the concept for the International Crown, the LPGA's world team tournament. Personally generous, he hosts the Kids Golf Foundation in a building on the Rich Harvest campus.

• **Dave Ryan** – from downstate Taylorville, Ryan has built a formidable resume in senior amateur golf. His victory in the 2016 U.S. Senior Amateur at Old Warson Country Club in St. Louis is the capstone, so far, in a career including four Illinois Senior Amateur titles and seven senior player of the year awards.

• **Jim Suttie** - One of the game's foremost teachers, Dr. Jim Suttie counts Paul Azinger, Chip Beck, Jeff Sluman, Kevin Streelman and Mark Wilson among his more successful students. The DeKalb native starred at Northern Illinois, then moved into coaching and teaching.

AROUND ILLINOIS

Pontiac buys Elks course, clubhouse for \$500K

BY TIM CRONIN

There are visionaries in Pontiac. While some cities close municipal courses – Rockford shuttered Elliot Golf Course, one of its five, last year – Pontiac has gone in the other direction.

The central Illinois city of about 12,000 on Interstate 55 bought Pontiac Elks from the local Elks lodge at the top of the month. The price was \$500,000, and keeps the course both public and allows continued access by lodge members at a special rate.

The course has been there since 1919, when Tom Bendelow came down from Chicago on the train and laid out nine holes that opened in 1921, with a big revision by Larry Packard in 1973, when he built 13 holes to get the total to 18, the extra holes to replace land sold for condos to finance the expansion.

The Pontiac crowd was creative then and now. The now came about because the Elks were looking at a financial hole that would be difficult to climb out of. This makes it happen.

“This is a win/win for the Elks and the Pontiac community,” Pontiac mayor Bill Alvey said.

The city gets everything, including the golf clubhouse and the attached restaurant and hospitality center, plus an indoor pool. The Elks will run the restaurant and the city will run the golf course and pro shop.



Pontiac Elks Club

SAVED Pontiac residents will still be able to enjoy the Elks course thanks to the city’s April 1 purchase.

The Elks had controlled the course since 1946, when the Pontiac Golf and Country Club was on its last legs. That deal opened the course to limited public access, a door that opened wider over the years. By 2010, about 40 percent of the 20,000 annual rounds were public play.

The course sits on the flood plain of the Vermillion River, with four holes adjacent to it. Turtle Creek burbles across the first fairway, which

is barely a mile east of Interstate 55, and west of old Route 66.

There’s another public course just north of Pontiac, but the Elks is the better course, and the city, hurting for industry – the big businesses in town are a Caterpillar Tractor plant and a state prison – needed a recreational facility not only for today’s residents, but to help attract more residents, and ideally, another big firm.

The announcement was made April 1. Five days later, Alvey won re-election to a third term as mayor in a race where the golf course purchase wasn't a contentious issue. Challenger Gerald Causer said, "The council realized that this was a great deal offered at a dismal time. But, moving forward towards the future, we couldn't let it go."

It's expected the course will be renamed in 2022. For now, it's still Pontiac Elks, immediately off Route 116, waiting for company.

At 100, Guy Ellis is one in a million

Seniors love golf. Many play a couple of times a week.

Guy Ellis of Decatur plays three times a week and thinks he'll do so for another five years.

By then, he'll be 105 years old.

The centenarian, discovered by Champaign's WCIA-TV, is a regular at Red Tail Golf Course, and can still hit the ball well. And he may have discovered golf's – and life's – secret.

"To me, it's simple," Ellis said. "I try not to worry about a damn thing. And I've always liked everybody. I never disliked anybody. I try to like everybody. And it's worked for me. I just seem to get along with everybody. We're all here together, by God, we should get along."

As one can imagine, he has a legion of friends, and said they keep him going.

"And they all know that I'm going for 105," Ellis said. "And they all urge me on. They all claim I do them some good, but they don't know they do a lot for me... Keep me going."

In five years, Ellis said, he'll sit down and think about his future plans. For now, fore!

Disc golf rules in Godfrey

Little did the good fathers of downstate Godfrey realize what they were doing when they invited the Professional Disc Golf Association to

town. They would start the ball rolling toward the awarding of a Governor's Home Town Award for Economic Opportunity for La Vista Park's disc golf course.

The announcement came March 30. There will eventually be a plaque and a road sign commemorating the award.

"I look at this as another way to show off our wonderful community to people who will be visiting the course to enjoy playing disc golf," Godfrey mayor Mike McCormick said.

This was more than just a bunch of baskets designed to catch Frisbees. This was an 18-hole course across many of the 93-acre park.

Car dealer Jason Enos pushed for it, the Alton-Godfrey Rotary Club jumped onboard, and the Bluff City Disc Golf Club provided expertise.

That helped bring a full field of 144 disc golfers to town under the auspices of the St. Louis Disc Golf Club. They came from five states.

Illini ink Bloomington's Barger

Mike Small's Illinois golf program just gets better and better. Aside from winning the Ohio State Invitational in mid-April, the last tourney before the Big Ten Championship, Small lined up another standout in T.J. Barger of Bloomington.

Barger, a senior, won the IHSA 2A title as a sophomore and finished fourth in his junior year. There was no IHSA championship in 2020 thanks to COVID-19, but Barger more than made up for that with a series of good showings in AJGA play against players from across the world.

"It boosted my confidence to know that I can play with these guys," Barger told Jim Benson of *The Pantagraph*. "I realized when coach Small and the U of I got in contact with me, if I got the chance I'll take it."

Barger will be categorized as a preferred

walk-on, which means he gets everything but a full scholarship. As he put it, "I get all the perks like a scholarship golfer gets. I can earn money year-by-year. It just depends on how I play and perform."

In picking Illinois, Barger left behind offers from Nebraska and hometown Illinois State.

The powerhouse Illini have sent numerous players into professional golf. Barger is eager to make his mark.

"I think I'll find my way in the lineup sooner rather than later," Barger said. "I can get a lot better."

Crab Orchard will remain 18 holes

New owner Russell Brown of Carterville promised Crab Orchard Golf Course, that southern Illinois town's gathering place, will remain an 18-hole operation after buying it from longtime owner Steve Heckel last September.

Brown made the deal with Heckel before someone else's offer was accepted. The other deal might have seen the course eliminated or cut to nine holes.

"My family and I sat down and we decided to preserve the community and the golf course," Brown told the *Southern Illiniosian*. "It's kind of a keystone of the community."

People

Mike Weiler returns to Illinois as the new boss at Eagle Ridge in Galena. ... In Carbondale, the park district's board named **Trey Anderson** as the operation's interim executive director, effective May 15. Anderson, who joined the park district in 2006, has been the acting superintendent at the park district's Hickory Ridge Public Golf Course the past three years. He will serve as the interim district head with current executive director **Kathy Renfro** leaving after 14 years.

IG TOURNAMENT CENTRAL

The National Scene

**Key national and international championships,
WGA, WWGA, USGA, plus tour stops in Illinois and vicinity**

April

1- 4 **50th ANA Inspiration / Dinah Shore**, Mission Hills CC, Rancho Mirage, Calif.

8-11 **86th Masters Tournament**, Augusta National GC, Augusta, Ga.

24-28 U.S. Women's Amateur Four-Ball, Maridoe GC, Carrollton, Tex.

May

6- 9 **103rd PGA Championship**, Kiawah Island / Ocean, Kiawah Island, S.C.

8- 9 Walker Cup, Seminole GC, Juno Beach, Fla.

22-26 U.S. Amateur Four-Ball, Chambers Bay, University Place, Wash.

27-30 3rd Evans Scholars Invitational (KFT), The Glen Club, Glenview

27-30 **81st Senior PGA Championship**, Southern Hills CC, Tulsa, Okla.

June

3- 6 **76th U.S. Women's Open**, Olympic Club / Lake, San Francisco

11-13 Palmer Cup Matches, Rich Harvest Links, Sugar Grove

11-13 American Family Insurance Championship, University Ridge GC, Madison, Wis.

17-20 **121st United States Open**, Torrey Pines GC / South, San Diego

17 59th Radix Cup Match, Oak Park CC, River Grove

21-24 **103rd Western Junior**, Onwentsia C, Lake Forest

21-25 **94th Women's Western Junior**, Aurora CC, Aurora

24-27 **67th Women's PGA Championship**, Atlanta AC, Johns Creek, Ga.

24-27 **39st Senior Players Championship**, Firestone CC / South, Akron, Ohio

July

8-11 **41st U.S. Senior Open**, Omaha CC, Omaha, Neb.

8-11 **50th John Deere Classic**, TPC Deere Run, Silvis

12-17 U.S. Girls Junior, Columbia CC, Chevy Chase, Md.

15-18 **149th British Open**, Royal St. George's GC, Sandwich, Eng.

15-18 Memorial Health Championship (KFT), Panther Creek CC, Springfield

19-24 **121st Women's Western Amateur**, Park Ridge CC, Park Ridge

19-24 U.S. Junior Amateur, CC of North Carolina, Pinehurst, N.C.

22-25 **34th Senior British Open**, Sunningdale / Old, Berkshire, Eng.

26-31 **119th Western Amateur**, Glen View C, Golf

29-8/ 1 **4th Olympic Golf Men's Competition**, Kasumigaseki CC, Saltama, Japan

29-8/ 1 U.S. Senior Women's Open, Brooklawn CC, Fairfield, Conn.

August

2- 8 121st U.S. Women's Amateur, Westchester CC, Rye, N.Y.

5- 8 WGC St. Jude Invitational, TPC Southwind, Memphis, Tenn.

9-15 121st U.S. Amateur, Oakmont CC, Oakmont, Pa.

13-15 Four Winds Invitational (Symetra), South Bend CC, Ind.

19-22 **45th Women's British Open**, Carnoustie GC, Scotland

26-29 **118th BMW Championship / Western Open**, Caves Valley GC, Owings Mills, Md.

26-28 Curtis Cup, Conwy GC, Wales

28-9/ 2 U.S. Senior Amateur, CC of Detroit, Grosse Pointe Farms, Mich.

September

2- 5 35th Tour Championship, East Lake GC, Atlanta

4- 6 **17th Solheim Cup**, Inverness C, Toledo, Ohio

10-15 U.S. Senior Women's Amateur, Lakewood C, Point Clear, Ala.

24-26 **43rd Ryder Cup**, Whistling Straits / Straits, Haven, Wis.

25-30 U.S. Mid-Amateur, Sankaty Head GC, Sicaonset, Mass.

25-30 U.S. Women's Mid-Amateur, Berkeley Hall C / North, Bluffton, S.C.

October

November

11-14 Charles Schwab Cup Championship, Phoenix CC, Phoenix

18-21 CME Group LPGA Tour Championship, Naples, Fla.

USGA Qualifying
www.usga.org; conducted locally by CDGA

April

29 U.S. Women's Open, Kishwaukee CC, DeKalb

May

3 U.S. Open / Local, Cog Hill G&CC / Dubsdread, Palos Park

10 U.S. Open / Local, Cantigny G / Woodside-Lakeside, Winfield

17 U.S. Open / Local, Illini CC, Springfield

June

1 U.S. Senior Open, Riverside GC, North Riverside

3 U.S. Girls Junior, Elgin CC, Elgin

10 U.S. Junior, Ravisloe CC, Homewood

July

6 U.S. Amateur, Stonebridge CC, Aurora

7 U.S. Amateur, Weibring GC at Illinois State, Normal

7 U.S. Women's Amateur, Oak Grove GC, Harvard

12 U.S. Amateur, Lake Shore CC, Glencoe

13 U.S. Senior Women's Open, Midlothian CC, Midlothian

27 U.S. Senior Amateur, The Hawk, St. Charles

August

16 U.S. Mid-Amateur, Glen Flora CC, Waukegan

16 U.S. Women's Mid-Amateur, Glen Flora CC, Waukegan

17 U.S. Senior Women's Amateur, Rockford CC, Rockford

26 U.S. Mid-Amateur, Ironwood GC, Normal

30 2022 U.S. Amateur Four-Ball, Aurora CC, Aurora

30 2022 U.S. Women's Amateur Four-Ball, Aurora CC, Aurora

September

2 U.S. Mid-Amateur, Prestwick CC, Frankfort

21 2022 U.S. Amateur Four-Ball, White Deer Run GC, Vernon Hills

Illinois PGA
www.ipga.com · Key tournaments

May

10-13 **Illinois PGA Match Play**, Bull Valley GC, Woodstock

24 Evans Scholar Invitational Qualifying, Stonewall Orchard GC, Grayslake; White Deer Run GC, Vernon Hills

June

3 31st Thompson Cup, Ridge CC, Chicago

17 **59th Radix Cup Match**, Oak Park CC, River Grove

23 Illinois Open Qualifying, Deerfield GC, Deerfield

28-29 Illinois Senior Open, St. Charles

30 Illinois Open Qualifying, Maple Meadows GC, Wood Dale

July

6 Illinois Open Qualifying, Flossmoor GC, Flossmoor

8 Illinois Open Qualifying, Ironwood GC, Normal

14 Illinois Open Qualifying, Sunset Valley GC, Highland Park

21 Illinois Open Qualifying, The Hawk CC, St. Charles

28 Illinois Open Qualifying, Countryside GC / Prairie, Mundelein

August

2- 4 **72nd Illinois Open**, Stonebridge CC, Aurora

9-10 Illinois PGA Senior, Bryn Mawr CC, Lincolnwood

23-25 **100th Illinois PGA Championship**, Ivanhoe C, Invaohoe

30 Central Illinois District Championship, TBA

31-9/ 1 Illinois Super Senior Open, Pine Meadow GC, Mundelein

September

7 Birdies for Charity, River Forest CC, Elmhurst; CC of Decatur

27-28 **Illinois PGA Players Championship**, Knollwood C, Lake Forest

October

4- 6 Illinois PGA Senior Match Play, Shoreacres, Lake Bluff

11-12 Illinois PGA Senior Players, Beverly CC, Chicago

Chicago District GA
www.cdga.org · Key tournaments

May

17-19 6th CDGA Mid-Amateur, Lake Shore CC, Glencoe

June

7-10 19th CDGA Senior Amateur, Merit Club, Libertyville

17 **59th Radix Cup Match**, Oak Park CC, River Grove

21-24 101st CDGA Amateur Championship, Bull Valley GC, Woodstock

July

20-22 90th Illinois Amateur, Mistwood GC, Romeoville

August

9-11 6th CDGA Amateur Four-Ball, Flossmoor GC, Flossmoor

23-24 29th Illinois Mid-Amateur, Bloomington CC, Bloomington

September

13-15 35th Illinois Senior Amateur, Preserve at Oak Meadows, Addison

27-30 6th CDGA Senior Am. Four-Ball, Ravinia Green CC, Riverwoods

Chicago Women's District GA

www.cwdga.org

June

7 Better Ball of Pairs, Crystal Tree CC, Orland Park

August

2- 4 **89th CWDGA Championship**, Medinah CC / No. 2, Medinah

31 One-Day Stroke Play, North Shore CC, Glenview

September

22 Senior Better-Ball of Pairs, Midlothian CC, Midlothian

IG TOURNAMENT CENTRAL

Illinois Women's GA

<http://iwga.org>

June

15-17 **87th Illinois Women's Amateur**, Pine Meadow GC, Mundelein

August

4- 5 42nd Illinois Junior Girls Championship, Aldeen GC, Rockford

September

14-16 52nd Illinois Senior Women's Amateur, Pekin CC, Pekin

Notable Amateur Tournaments

April

17-18 Will County Amateur, Balmoral Woods, Crete

24-25 Illinois State Scramble, Village Greens of Woodridge

May

15-16 I-80 Amateur, Sanctuary GC, New Lenox

15-16 East Side Amateur, Gateway National GL, Madison

22-23 Tazewell County Amateur, Lick Creek GC, Pekin

22-23 Peoria City Stroke Play, Newman GC, Peoria

27-28 Olympia Fields Four-Ball Invitational, Olympia Fields CC

June

5- 6 Joliet Amateur, Wedgewood GC, Plainfield

5- 6 Central Illinois Amateur, Lincoln Greens GC, Springfield

7- 8 Metropolitan Women's Amateur, St. Clair CC, Belleville

12-13 Pine Hills Invitational, Pine Hills GC, Ottawa

12-20 Bloomington-Normal Match Play, Prairie Vista GC, Bloomington

26-27 Blackberry Amateur, Blackberry Oaks GC, Bristol

July

9-11 Galesburg Men's All-City, Soangetaha CC, Galesburg

17-18 Southern Illinois GA Championship, Links at Kokopelli, Marion

17-18 Peoria Women's Championship, Newman GC, Peoria

17-18 Mercer County Amateur, Frye Lake GC, Sherrard

21-23 Northern Amateur, Sand Creek CC, Chesterton

23-24 McHenry County Amateur, Blackstone GC, Marengo

24-25 Naperville Men's Amateur, Springbrook GC, Naperville

24-25 Twin City Tournament, Champaign CC, Champaign

24-8/ 1 Springfield City Amateur, Lincoln Greens GC, Springfield

28-29 North Shore Amateur, Sunset Valley GC, Highland Park

August

2- 7 Peoria Men's Match Play, Newman GC, Peoria

7- 8 Knox County Amateur, Oak Run GC, Dahinda

7- 8 Bloomington-Normal Medal Play, Bloomington CC, Bloomington

7- 8 Short Hills Amateur, Short Hills CC, East Moline

18-19 Naperville Senior Amateur, Springbrook GC, Naperville

21-22 Quad Cities Amateur Tour Champ., Oakwood CC, Coal Valley

September

11-12 Southern Illinois Amateur, Green Hills GC, Mount Vernon

21-22 Wally Boughton Senior Open, Blackberry Oaks GC, Bristol

October

2- 3 Balmoral Woods Fall Senior, Balmoral Woods, Crete

NIMAGA

www.nimaga.org • Key tournaments

April

10 Spring Thaw, Cog Hill G&CC / Nos. 1, 3, Palos Park

May

1 May Jamboree, Bloomingdale GC, Bartlett Hills GC

13 NIMAGA Cup, Mistwood GC, Romeoville

June

6 Summer Classic, Old Oak CC; Water's Edge GC

26 Freedom Open, Prairie Buff GC, Crest Hill

July

18 Northern Open, Brighton Dale Links, Kansasville, Wis.

August

4 Senior Open, Traditons at Chevy Chase CC, Wheeling

15 August Classic, Sanctuary GC, Pinecrest GC

September

11 Patriots Day Classic, Redtail GC, Foxford Hills GC

18 Milwaukee Challenge, Bristol Oaks GC, Bristol, Wis.

22 September Midweek, Thunderhawk GC, Beach Park

October

3 Two-Man Better Ball, Coyote Run GC; Silver Lake CC / North

9 NIMAGA Players Championship, Highlands of Elgin

Weekly Challenge Golf Tour

www.wcgt.com • Key Tournaments

April

17 St. Andrews / No. 1, West Chicago

May

11 Village Links of Glen Ellyn, Glen Ellyn

20 Naperville CC, Naperville

26 Stonewall Orchard GC, Grayslake

June

5 Cog Hill No. 1, Palos Park

10 Arrowhead GC / South-East, Wheaton

29 Stonebridge CC, Aurora

July

6 Preserve at Oak Meadows, Addison

10 WCGT Open, Oak Brook GC, Oak Brook

17 Prairie Isle GC, Crystal Lake

20 Aurora CC, Aurora

31 Balmoral Woods, Crete

August

9 Cress Creek CC, Naperville

23 Crystal Tree CC, Orland Park

28 Bolingbrook GC, Bolingbrook

September

2 Poplar Creek GC, Hoffman Estates

25 Village Links of Glen Ellyn, Glen Ellyn

12 Crystal Woods GC, Huntley

October

8- 9 Tournament of Champions, Whisper Creek CC; Cog Hill / No. 2

16 Weekly Challenge Cup, TBA

November

5- 7 National Tour Challenge, TBA, Orlando, Fla.

Notable Junior Tournaments

June

22-23 Little People's Championships, Harry Mussatto GC

October

8- 9 IHSA Championships (expected sites):

1A Girls, Red Tail Run GC, Decatur

2A Girls, Hickory Point GC, Decatur

1A Boys, Prairie Vista GC, Bloomington

2A Boys, Weibring GC at Illinois State, Normal

3A Boys, The Den at Fox Creek, Bloomington

Illinois Junior GA

www.ijga.org • Key tournaments through August

May

1- 2 Players Challenge No. 1, Countryside GC / Prairie, Mundelein

June

15-16 **DuPage County Junior Championship** (5 divisions), Pre-

serve at Oak Meadows, Addison; Maple Meadows GC, Wood Dale

17 Medinah County Shrine Invitational, Medinah CC Nos. 1, 2

29-7/ 1 **52nd Illinois Junior Amateur**, Makray Memorial GC, Barrington

July

19-22 **41st Chick Evans Junior Amateur**, Itasca CC, Itasca

August

2 IJGA Player of Year, The Hawk, St. Charles

9-10 Youth Development Player of Year, Randall Oaks GC, Dundee

Mid-America Junior Golf Tour

www.ijga.org/majgt • Schedule through June

May

8- 9 ThunderHawk, Beach Park

22-23 Golf Club of Illinois, Algonquin

June

8- 9 Ravisloe CC, Homewood

14-15 Geneva National Resort, Lake Geneva, Wis.

24-25 Countryside GC / Prairie, Mundelein

28-29 MAJGT Girls Championship, Ridge CC, Chicago

Illinois PGA Junior Tour

www.ipga.com/jr-golf-home/

June

14 Ruth Lake CC, Hinsdale

21 Merit C, Libertyville

28 Westmoreland CC, Wilmette

July

6 Naperville CC, Naperville

12 Briarwood CC, Deerfield

19 Flossmoor CC, Flossmoor

26 Illinois PGA Junior Masters, Onwentsia C

THE DIRECTORY

GREATER CHICAGO COOK COUNTY / NORTH

Anetsberger 9: 27 / 1,128 / unrated
1750 Techy Ct., Northbrook • (847) 291-2971 • www.sportsmansgolf.com Michael Wenzel

Arlington Lakes 18: 68 / 5,336 / 65.8 / 115
1211 S. New Wilke Rd., Arlington Heights • (847) 577-3030 • www.ahpd.org/programs/golf Tim Govern (GM)

Bartlett Hills 18: 71 / 6,463 / 71.7 / 130
800 W. Oneida, Bartlett • (630) 837-2741 • www.bartletthills.com Phil Lenz

Billy Caldwell 9: 35 / 3,108 / 69.6 / 115
6150 N. Caldwell Ave., Chicago • (773) 792-1930 • www.forestpreservegolf.com

Bridges of Poplar Creek 18: 70 / 6,500 / 71.2 / 136
1400 Poplar Creek Dr., Hoffman Estates • (847) 884-0219 • www.poplarcreekcc.com
Brian Bechtold

Canal Shores (Peter Jans) 18: 60 / 3,904 / 57.9 / 86
1031 Central St., Evanston • (847) 475-9173 • www.canalshores.org Tony Frandria (Spt.)

Chick Evans 18: 71 / 5,626 / 67.2 / 122
6145 Golf Rd., Morton Grove • (847) 965-5353 • www.forestpreservegolf.com Grit Suyasri

Edgebrook 18: 66 / 4,567 / 61.2 / 88
6100 N. Central Ave., Chicago • (773) 763-8320 • www.forestpreservegolf.com Jim Tourloukis (GM)

Fox Run 18: 70 / 6,287 / 70.1 / 119
333 Plum Grove Rd., Elk Grove Village • (847) 228-3544 • www.foxrungolfinks.com
Thomas Klaas (GM)

The Glen Club 18: 72 / 7,149 / 74.8 / 140
2901 W. Lake Ave., Glenview • (847) 724-7272 • www.theglenclub.com Alex Prior

Glencoe 18: 72 / 6,527 / 71.6 / 130
621 Westley Rd., Glencoe • (847) 835-0250 • www.glencoeclub.com Matt Radde

Glenview Prairie 9: 31 / 1,955 / 29.7 / 94
2800 W. Lake Ave., Glenview • (847) 657-1637 • www.golfglenview.com Kristen Kechik (GM)

Glenview Park 18: 70 / 6,109 / 68.9 / 123
800 Shermer Rd., Glenview • (847) 724-0250 • www.golfglenview.com Michael Stone

Golf Center Des Plaines 9: 27 / 1,050 / 70.0 / 113
353 River Rd., Des Plaines • (847) 803-4653 • www.dpparks.org/golfcenter

Grayslake 9: 27 / 1,137 / unrated
2150 Drury Ln., Grayslake • (847) 548-4713 • www.glpd.com Mike Perez (GM)

Heritage Oaks (Sportsman's) Classic 18: 70 / 6,278 / 70.4 / 126 Renovation; reopens 2022
East 9: 35 / 3,010 / 34.6 / 118
3535 Dundee Rd., Northbrook • (847) 291-2351 • www.sportsmansgolf.com Greg Baron

Highland Woods 18: 72 / 6,934 / 72.5 / 124
2775 Ela Rd., Hoffman Estates • (847) 359-5850 • www.forestpreservegolf.com Joe Bidro (GM)

Hilldale 18: 71 / 6,432 / 71.6 / 135
1625 Ardwick Dr., Hoffman Estates • (847) 310-1100 • www.hilldalegolf.com

ABOUT THE DIRECTORY

This is the most complete public course directory to be found in any golf publication in Illinois. Included are all public courses known to be open in Illinois, practice ranges in the nine-county Chicago area, plus selected courses elsewhere in Indiana, Wisconsin and Michigan. Illinois listings outside Chicago area are by zone, with county also listed for reference.

Course detail (yardage, rating, slope from back tees) supplied by courses and the CDGA. Head pro or GM listed if known. Please e-mail changes to illinoisgolfer@earthlink.net. **Expanded listings** are available at a low price; please e-mail or call (708) 638-1164.

Indian Boundary 18: 72 / 6,068 / 69.0 / 116
8600 W. Forest Preserve Ave., Chicago • (773) 625-9630 • www.forestpreservegolf.com

Lake Park 9: 27 / 1,515 / unrated
1015 Howard St., Des Plaines • (847) 391-5730 • www.dpparks.org

Makray Memorial 18: 72 / 7,015 / 74.1 / 132
1010 S. Northwest Hwy., Barrington • (847) 381-6500 • www.makraygolf.com Don Habjan

Marovitz (Waveland) 9: 36 / 3,265 / 35.2 / 124
3600 N. Recreation Dr. (at Addison), Chicago • (312) 742-7930 • www.cpdgolf.com
Mark McCord (GM)

Mount Prospect 18: 71 / 6,305 / 71.3 / 135
600 S. See Gwun Ave. (at Shabonee), Mount Prospect • (847) 259-4200 • www.mppd.org/golf.php Brett Barcel

Nickol Knoll 9: 27 / 1,163 / unrated
3800 N. Kennecott Ave., Arlington Heights • (847) 590-6050 • www.ahpd.org/programs/golf/nickol Tim Govern (GM)

Old Orchard 18: 70 / 6,119 / 70.1 / 130
700 W. Rand Rd., Mount Prospect • (847) 255-2025 • www.oldorchardcc.com Doug Brezeau

Palatine Hills 18: 72 / 6,800 / 72.5 / 127
512 W. Northwest Hwy., Palatine • (847) 359-4020 • www.palatinehills.org Dan Hotchkin

Rob Roy 9: 36 / 3,022 / 37.8 / 119
505 E. Camp McDonald Rd., Prospect Heights • (847) 253-4544 • www.robroygc.com

Robert A. Black 9: 33 / 2,361 / 31.7 / 100
2045 W. Pratt Blvd., Chicago • (312) 742-7931 • www.cpdgolf.com Jerry Losos

Schaumburg
Tournament / Baer 18: 71 / 6,644 / 71.7 / 130
Players 9: 35 / 3,189 / 34.7 / 124
401 N. Roselle Rd., Schaumburg • (847) 885-9000 • www.schaumburggolf.com
Preston "Pepi" Irwin

Tam O'Shanter 9: 33 / 2,457 / 63.2 / 110
6700 W. Howard St., Niles • (847) 965-2344 • www.niles-parks.org Chris Urgo

Traditions at Chevy Chase 18: 72 / 6,610 / 71.9 / 128
1000 N. Milwaukee Ave., Wheeling • (847) 465-2300 • www.chevychasecountryclub.com
Margie Arnold (GM)

Twin Lakes 9: 29 / 1,460 / 35.0 / 113
1200 E. Lake Dr., Palatine • (847) 934-6050 • saltcreek.multisportssystem.com

Villa Olivia 18: 72 / 6,510 / 72.4 / 124
Rt. 20 & Naperville Rd., Bartlett • (630) 289-1000 • www.villaolivia.com/golfinfo

Walnut Greens 9: 27 / 1,078 / unrated
1150 N. Walnut Ln., Schaumburg • (847) 490-7878 • www.walnutgreengolf.com

Weber Park 9: 27 / 1,095 / 35.5 / 113
9300 Weber Park Pl., Skokie • (847) 674-1400 x3600 • www.skokieparkdistrict.org

Willow Hill 9: 35 / 2,895 / 34.2 / 118
1350 Willow Rd., Northbrook • (847) 480-7888 • www.willowhillgolfcourse.com Adam Kwiatkoski

Wilmette 18: 70 / 6,400 / 70.9 / 130
3900 Fairway Dr., Wilmette • (847) 256-9777 • www.golfwilmette.com Jamie Locke

Winnetka 18: 71 / 6,517 / 72.6 / 130
9: 27 / 1,194 / unrated
1300 Oak St., Winnetka • (847) 501-2050 • www.winpark.org/golf-club Cortney Miller

COOK COUNTY / SOUTH

Calumet 18: 71 / 6,619 / 71.3 / 132 Likely last year of play
2136 W. 175th St., Homewood • (708) 799-2230 • www.calumetcc.com

Cog Hill No. 1 / Blue 18: 70 / 6,282 / 69.7 / 118
No. 2 / Ravines 18: 72 / 6,639 / 71.8 / 124
No. 3 / Red 18: 72 / 6,402 / 69.7 / 116
No. 4 / Dubsread 18: 72 / 7,616 / 77.8 / 151
12294 Archer Ave., Palos Park • (630) 257-5872 • www.coghilgolf.com

Coyote Run 18: 71 / 6,478 / 69.5 / 123
Practice 3: 9 / 373 / unrated
800 Kedzie Ave., Flossmoor • (708) 957-8700 • www.coyoterungolf.com Brian Smith

Dunne National 18: 72 / 7,262 / 75.4 / 142
16310 S. Central Ave., Oak Forest • (708) 429-6886 • www.forestpreservegolf.com

Flagg Creek 9: 33 / 2,493 / 31.9 / 104
6939 S. Wolf Rd., Countryside • (708) 246-3336 • www.flaggcreekgolfcourse.com Billy Rosinia

Fountain Hills 9: 36 / 3,233 / 35.1 / 112
12601 S. Kedzie Ave., Alsip • (708) 388-4653 • www.fountainhillsgc.com Rich Gottardo (GM)

Fresh Meadow 18: 70 / 6,283 / 70.1 / 116
2144 S. Wolf Rd., Hillside • (708) 449-0000 • www.freshmeadowgc.com Michael Huber

Gleneagles Red / Lakes 18: 70 / 6,029 / 68.0 / 116
White / Woodland 18: 70 / 6,302 / 70.1 / 124
13070 McCarthy Rd., Palos Park • (630) 257-5466 • www.golfgleneagles.com Gregg Miller

Don't see your favorite public course listed? Call us at (708) 638-1164.

Glenwoodie 18: 72 / 6,902 / 71.6 / 125
19301 S. State St., Glenwood • (708) 758-1212 • www.glenwoodiegolf.com Phil Robbins

Harborside International
Port 18: 72 / 7,164 / 74.8 / 136
Starboard 18: 72 / 7,166 / 74.7 / 135
11001 S. Doty Ave. East, Chicago • (312) 782-7837 • www.harborsideinternational.com Joel Voss

Hickory Hills 18: 71 / 6,018 / 67.9 / 116
9: 30 / 1,560 / unrated
8201 W. 95th St., Hickory Hills • (708) 598-5900 • www.hickoryhillsgolfclub.com

Jackson Park 18: 70 / 5,444 / 65.7 / 109
6401 W. Richard Dr., Chicago • (773) 667-0524 • www.cdpgolf.com Tyrone Banks (GM)

Joe Louis The Champ 18: 72 / 6,742 / 71.4 / 124
13100 S. Halsted St., Riverdale • (708) 849-1731 • www.forestpreservegolf.com Bryan Carroll

Marquette Park 9: 36 / 3,245 / 35.5 / 119
6700 S. Kedzie Ave., Chicago • (312) 747-2761 • www.cdpgolf.com Steve McDaniels (GM)

Meadowlark 9: 36 / 3,404 / 35.9 / 114
11599 W. 31st St., Oak Brook • (708) 562-2977 • www.forestpreservegolf.com

Meadows of Blue Island 18: 71 / 6,581 / 71.3 / 121
2802 W. 123rd St., Blue Island • (708) 385-1994 • www.meadowsgc.com Jerry Vidovic

Oak Hills 9: 34 / 2,520 / 33.0 / 109
13200 S. 76th Ave., Palos Heights • (708) 448-5544 • www.oakhills.com Allan Parkes

Odyssey 18: 72 / 7,095 / 73.1 / 131
19110 S. Ridgeland Ave., Tinley Park • (708) 429-7400 • www.odysseycountryclub.com

Palos Southmoor 9: 35 / 3,154 / 70.4 / 128
13100 Southwest Hwy., Orland Park • (708) 448-6550 • www.paloscountryclub.com

Palos Hills 9: 35 / 2,838 / 67.4 / 119
7301 W. 105th St., Palos Hills • (708) 599-0202 • www.paloshillsweb.org/golf Gwen Leddy (GM)

Ravisloe 18: 70 / 6,321 / 70.8 / 127
18231 S. Park Ave., Homewood • (708) 798-5600 • www.ravisloecountryclub.com

River Oaks 18: 72 / 5,952 / 69.3 / 119
1 Park Ave., Calumet City • (708) 868-4090 • www.forestpreservegolf.com

Ruffed Feathers 18: 72 / 6,898 / 73.7 / 140
1 Pete Dye Dr., Lemont • (630) 257-1000 • www.ruffedfeathersgc.com Gordon Acton

Silver Lake North 18: 72 / 6,826 / 72.6 / 124
South 18: 70 / 6,337 / 70.2 / 124
Rolling Hills 9: 29 / 1,587 / 27.1 / unslped
14700 S. 82nd Ave., Orland Park • (708) 349-6940 • www.silverlakecc.com

South Shore 9: 33 / 2,713 / 32.9 / 112
7059 S. South Shore Dr., Chicago • (312) 955-1892 • www.cpdgolf.com Adrienne Carney (GM)

Stony Creek 18: 65 / 5,004 / 62.5 / 103
5850 W. 103rd St., Oak Lawn • (708) 857-2433 • www.golfstonycreek.com

Water's Edge 18: 72 / 6,904 / 72.9 / 131
7205 W. 115th St., Worth • (708) 671-1032 • www.watersedgegolf.com Jim Torloukis (GM)

White Mountain 9: 29 / 1,741 / 27.1 / unslped
9901 W. 179th St., Orland Park • (708) 478-4653 • www.whitemountaingolfpark.com Mike Camerano

When you check in to play, tell the clerk you saw the listing in Illinois Golfer!

LAKE COUNTY / ILLINOIS

Arboretum 18: 72 / 6,447 / 71.6 / 137
401 Half Day Rd., Buffalo Grove • (847) 913-1112 • www.arboretumgolf.com Carmen Molinaro

Barrington Park District 5: 15 / 675 / unrated
235 Lions Dr., Barrington • (847) 381-0687 • www.barringtonparkdistrict.com

Bittersweet 18: 72 / 6,754 / 72.8 / 130
875 Almond Rd., Gurnee • (847) 855-9031 • www.bittersweetgolf.com Sean Joyce

Bonnie Brook 18: 72 / 6,701 / 72.3 / 128
2800 N. Lewis Ave., Waukegan • (847) 360-4730 • www.waukegangolf.org Tony Tinetti

Brae Loch 18: 70 / 5,876 / 67.5 / 114
33600 N. Hwy. 45, Grayslake • (847) 968-3444 • www.lcfdp.org/brae_loch Bill Ebdon

Buffalo Grove 18: 72 / 6,693 / 72.1 / 127
48 Raupp Blvd., Buffalo Grove • (847) 459-5520 • www.buffalogrovegolf.com Joe Bridges

Countryside Traditional 18: 72 / 6,397 / 70.3 / 118
Prairie 18: 72 / 6,757 / 71.4 / 121
20800 W. Hawley St., Mundelein • (847) 968-3466 • www.lcfdp.org/countryside

Crane's Landing Marriott 18: 70 / 6,290 / 71.1 / 130
10 Marriott Dr., Lincolnshire • (847) 634-5935 • www.craneslandinggolf.com Tim Pagel

Deerfield 18: 72 / 6,816 / 72.4 / 131
1201 Saunders Dr., Riverwoods • (847) 945-8333 • www.deerfieldgolf.org Jason Minnina

Deerpath 18: 70 / 6,255 / 70.6 / 130
500 W. Deerpath Rd., Lake Forest • (847) 615-4290 • www.deerpathgolf.com Rick Walrath (GM)

Foss Park 18: 72 / 6,839 / 71.9 / 113
3124 Argonne Dr., North Chicago • (847) 689-7490 • www.fossparkgolf.org Gabe Monroe

Fox Lake 18: 72 / 6,359 / 71.3 / 126
7220 State Park Rd., Fox Lake • (847) 587-6411 • www.foxlakecc.net Vince Juarez (GM)

Greenshire 9: 27 / 1,265 / unrated
38727 N. Lewis Ave., Beach Park • (847) 360-4777 • www.waukegangolf.org

Heather Ridge 9: 35 / 3,007 / 35.1 / 117
5900 HeatherRidge Dr., Gurnee • (847) 367-6010 • www.heatheridgegolf.com Dirk Skelley

Hickory Knoll 9: 30 / 1,780 / 35.5 / 113
24745 W. Monaville Rd., Lake Villa • (847) 356-8640 • www.golfhickoryknoll.com

Lake Bluff 18: 72 / 6,589 / 71.3 / 124
355 W. Washington St., Lake Bluff • (847) 234-6771 • www.lakebluffgolfclub.com Ed Heiser

Lakemoor 18: 72 / 6,334 / 70.5 / 124
29000 W. Sullivan Lake Rd., Lakemoor • (815) 759-0011 • no website

Libertyville 9: 27 / 1,205 / 35.0 / 113
870 Country Club Dr., Libertyville • (847) 362-5733 • www.libertyville.com Connie Kowal (GM)

Midlane 18: 71 / 6,681 / 73.1 / 131
4555 W. Yorkhouse Rd., Wadsworth • (847) 623-4653 • www.midlaneresort.com Michael Chappell

Pine Meadow 18: 72 / 7,297 / 74.8 / 138
1 Pine Meadow Ln., Mundelein • (847) 566-4653 • www.pinemeadowgc.com Dennis Johnsen

Renwood 18: 72 / 6,062 / 69.0 / 124
701 E. Shorewood Rd., Round Lake Beach • (847) 231-4711 • www.renwoodgolf.com Brad Rouse

Shepherd's Crook 18: 71 / 6,769 / 72.1 / 128
351 N. Greenbay Rd., Zion • (847) 872-2080 • www.shepherdsrook.org Larry Myers (GM)

Shiloh 9: 35 / 2,900 / 67.2 / 118
23rd St. and Bethesda Rd., Zion • (847) 746-5500, x420 • www.shilohparkgolf.com

Steeple Chase 18: 72 / 6,827 / 73.1 / 139
200 N. La Vista Dr., Mundelein • (847) 949-8900 • www.mundeleinparks.org/steeplechase.html

Stonewall Orchard 18: 72 / 7,124 / 74.7 / 148
25675 W. Hwy. 60, Grayslake • (847) 740-4890 • www.stonewallorchard.com Jeff Pajula

Sunset Valley 18: 72 / 6,484 / 71.8 / 131
1390 Sunset Rd., Highland Park • (847) 432-7140 • www.sunsetvalleygolfcourse.org Rob Saunders (GM)

ThunderHawk 18: 72 / 7,031 / 73.8 / 136
39700 N. Lewis Ave., Beach Park • (847) 872-4295 • www.lcfdp.org Bill Ebdon

Valley Ridge 18: 71 / 6,183 / 70.2 / 130
40150 N. Rt. 59, Antioch • (847) 395-3004 • www.antiochgolfclub.com Vince Juarez

Vernon Hills 9: 34 / 2,836 / 34.2 / 120
291 Evergreen Dr., Vernon Hills • (847) 680-9310 • www.vernonhillsgolf.com O.B. Sanders (GM)

Village Green 18: 70 / 6,018 / 68.6 / 117
2501 N. Midlothian, Mundelein • (847) 566-7373 • www.villagegreenc.com Tim Miles Jr. (GM)

White Deer Run 18: 72 / 7,101 / 74.5 / 142
250 W. Gregg's Pkwy., Vernon Hills • (847) 680-6100 • www.whitedeergolf.com Bob Malpede

Willow Glen 18: 71 / 6,637 / 72.1 / 125
2821 Great Lakes Dr., Great Lakes • (847) 688-4693 • www.mwrgl.com/recreation/golf/golf.htm Dan Kraft (GM)

DUPAGE COUNTY

Apple Orchard 9: 27 / 1,275 / unrated
692 W. Stearns Rd., Bartlett • (630) 540-4807 • www.bartlettclubs.org/Golf/general Tony Nuzzo

Arrowhead South-East 18: 72 / 6,738 / 72.5 / 132
combinations vary West 9: 36 / 3,295 / 35.9 / 130
26W151 Butterfield Rd., Wheaton • (630) 653-5800 • www.arrowheadgolfclub.org Bruce Stoller (GM)

Bloomingtondale 18: 71 / 6,251 / 70.2 / 123
181 Glen Elyn Rd., Bloomingtondale • (630) 529-6232 • www.bloomingtondalecc.com Dave Shallcross

Cantigny Woodside 9: 36 / 3,587 / 37.6 / 143
18-hole Lakeside 9: 36 / 3,437 / 36.6 / 136
combinations vary Hillside 9: 36 / 3,394 / 36.2 / 135
Youth Short 9: 27* / 954 / unrated
27W270 Mack Rd., Wheaton • (630) 668-8463 • www.cantignygolf.com Patrick Lynch

Carriage Greens 18: 70 / 6,395 / 71.4 / 126
8700 Carriage Greens Dr., Darien • (630) 985-3400 • www.carriagegreens.com

Country Lakes 18: 73 / 6,656 / 71.9 / 121
1601 Fairway Dr., Naperville • (630) 420-1060 • website inactive Mike Jablecki

Eaglewood Resort 18: 72 / 6,017 / 68.2 / 120
1401 Nordic Rd., Itasca • (630) 773-1400 • www.eaglewoodresort.com Andy Carr

Downers Grove 9: 36 / 3,233 / 72.6 / 131
2420 Haddon Dr., Downers Grove • (630) 963-1306 • www.dgparks.org

Glendale Lakes 18: 71 / 6,190 / 69.8 / 125
1550 President St., Glendale Heights • (630) 260-0018 • www.glendalelakes.com Jennifer Ferrell

Green Meadows 9: 30 / 1,888 / unrated
18W201 W. 63rd St., Westmont • (630) 810-5330 • www.dupagegolf.com Dean Westrom

WILL COUNTY

Klein Creek 18: 72 / 6,701 / 72.6 / 137
1N333 Pleasant Hill Rd., Winfield • (630) 690-0101 • www.kleincreek.com Matte Allman

Links & Tees 9: 27 / 1,161 / unrated
900 W. Lake St., Addison • (630) 458-2660 • www.addisonparks.org/links_and_tees

Maple Meadows 18: 70 / 6,438 / 71.0 / 126
East 9: 34 / 2,815 / 33.7 / 121
272 S. Addison Rd., Wood Dale • (630) 616-8424 • www.dupage.golf Chris Malek (GM)

Oak Brook 18: 72 / 6,541 / 71.1 / 126
2606 York Rd., Oak Brook • (630) 990-3032 • www.oak-brook.org Trey Van Dyke

Pheasant Run Resort 18: 72 / 6,424 / 70.6 / 122
4051 E. Main St., St. Charles • (630) 584-4914 • www.pheasantrun.com Robert Jan

Prairie Landing 18: 72 / 6,950 / 73.8 / 139
2325 Longest Dr., West Chicago • (630) 208-7600 • www.prairielanding.com Brian King

Preserve at Oak Meadows 18: 72 / 7,015 / TBA / TBA
900 N. Wood Dale Rd., Addison • (630) 595-0071 • www.dupagegolf.com Austin Kopp

River Bend 9: 36 / 3,300 / 70.8 / 126
5900 S. Rt. 53, Lisle • (630) 968-1920 • www.riverbendgolfclub.org Debbie Culbertson

St. Andrews St. Andrews 18: 71 / 6,920 / 71.8 / 124
Joe Jemsek 18: 72 / 6,770 / 72.0 / 120
3 N. 441 Rt. 59, West Chicago • (630) 231-3100 • www.standrewsgc.com Dave Erickson

Salt Creek 18: 63 / 3,946 / unrated
701 W. Thorndale Ave., Wood Dale • (630) 773-0184 • www.saltcreekgolfclub.com Tony Perry

Seven Bridges 18: 72 / 7,111 / 74.6 / 144
1 Mulligan Dr., Woodridge • (630) 964-7777 • www.sevenbridgesgolfclub.com Ben Nachtwey

Springbrook 18: 72 / 6,896 / 73.0 / 130
2220 W. 83rd St., Naperville • (630) 848-5060 • www.springbrookgolfcourse.org Mike Lzyun

Streamwood Oaks 9: 36 / 3,404 / 72.9 / 125
565 Madison Dr., Streamwood • (630) 483-1881 • www.streamwood.org

Sugar Creek 9: 32 / 2,344 / 62.0 / 106
500 E. Van Buren, Villa Park • (630) 834-3325 • www.sugarcreekgolfcourse.org Cory Ferrell

Twin Lakes 9: 28 / 1,381 / unrated
400 W. 59th St., Westmont • (630) 852-7167 • www.wpd4fun.com Ashley Medley (GM)

Village Greens of Woodridge 18: 72 / 6,638 / 71.2 / 121
1575 W. 75th St., Woodridge • (630) 985-3610 • www.villagegreensgolf.com Brandon Evans

Village Links of Glen Ellyn 18: 72 / 7,208 / 74.9 / 138
9: 36 / 3,303 / 35.7 / 129
485 Winchell Way, Glen Ellyn • (630) 469-8180 • www.villagelinksgolf.com Noel Allen

Western Acres 9: 35 / 3,052 / 69.2 / 111
2400 W. Butterfield Rd., Lombard • (630) 469-6768 • www.westernacres.com Don Voth

White Pines East 18: 70 / 6,371 / 71.1 / 127
West 18: 72 / 6,624 / 71.5 / 127
500 W. Jefferson St., Bensenville • (630) 766-0304 • www.whitepinesgolf.com Mike Huber (GM)

Willow Crest 18: 70 / 6,474 / 71.1 / 132
3500 Midwest Rd., Westmont • (630) 850-5515 • www.oakbrookhillsresortchicago.com/golf/golf.htm

Zigfield Troy 9: 27 / 1,089 / unrated
1535 75th St., Woodridge • (630) 985-4653 • www.zigfieldtroygolf.com Tim Troy, Dennis Troy

Balmoral Woods 18: 72 / 6,625 / 72.4 / 131
26732 S. Balmoral Woods Dr., Crete • (708) 672-7448 • www.balmoralwoods.com Bill Abrams

Big Run 18: 72 / 7,028 / 74.4 / 138
17211 W. 135th St., Lockport • (815) 838-1057 • www.bigrungolf.com Bill Roper

Bolingbrook 18: 72 / 7,104 / 73.8 / 135
2001 Rodeo Dr., Bolingbrook • (630) 771-9400 • www.bolingbrookgolfclub.com Eric Aldrich

Boughton Ridge 9: 32 / 2,205 / 30.1 / 105
335 E. Boughton Dr., Bolingbrook • (630) 739-4100 • www.bolingbrookparks.org

Braidwood Fairways 9: 36 / 2,914 / unrated
35494 Essex Rd. south of Smiley Rd., Wilmington • (815) 458-2965 • no website

Broken Arrow East / North 18: 72 / 7,034 / 74.5 / 130
South 9: 36 / 3,469 / 37.0 / 140
16325 W. Broken Arrow Dr., Lockport • (815) 836-8858 • www.golfbrokenarrow.com Michael Chen (GM)

Cinder Ridge 18: 72 / 6,968 / 73.1 / 139
24801 Lakepoint Dr., Wilmington • (815) 476-4000 • www.cinderridge.com Sue Krueger (GM)

Deer Creek 18: 72 / 6,905 / 73.2 / 129
25055 S. Western Ave., University Park • (708) 672-6667 • www.deercreekgolfcourse.com

Golf Vista Estates 9: 29 / 1,505 / unrated
4951 Augusta Blvd., Monee • (708) 534-8204 • www.golfvistagolfclub.com

Green Garden Blue 18: 72 / 6,670 / 71.7 / 120
Gold 18: 72 / 6,713 / 71.8 / 126
Emerald 9: 3 / 1,181 / 70.8 / 122
9511 W. Manhattan-Monee Rd., Frankfort • (815) 469-3350 • www.greengardencc.com

Heritage Bluffs 18: 72 / 7,171 / 74.1 / 138
24355 W. Bluff Rd., Channahon • (815) 467-7888 • www.heritagebluffs.com Brian Smith

Inwood 18: 71 / 6,196 / 70.1 / 131
3200 W. Jefferson St., Joliet • (815) 741-7265 • www.jolietinwoodgc.com Brian Legan

Lincoln Oaks 18: 71 / 6,186 / 69.0 / 120
395 E. Richton Rd., Crete • (708) 672-9401 • www.lincolnoaksgolfcourse.com Bob Seymour (GM)

Links at Carillon Blue / Red 18: 71 / 6,844 / 70.9 / 124
White 9: 36 / 3,438 / 36.0 / 61
21200 S. Carillon Dr., Plainfield • (815) 886-2132 • www.carillongolf.com Jeff Yackley

Longwood 18: 70 / 6,404 / 70.7 / 130
3503 E. Steger Rd., Crete • (708) 758-1811 • longwoodcc.com Joe Tintari (GM)

Mistwood 18: 72 / 6,773 / 72.4 / 137
1700 W. Renwick Rd., Romeoville • (815) 254-3333 • www.mistwoodgolf.net Andy Mickelson

Naperbrook 18: 72 / 6,677 / 72.0 / 127
22204 W. 111th St., Plainfield • (630) 378-4215 • www.naperbrookgolfcourse.org Tim Dunn

Old Oak 18: 71 / 6,609 / 71.1 / 128
14200 S. Parker Rd., Homer Glen • (708) 301-3344 • www.oldoakcc.com Dan Shields

Prairie Bluff 18: 72 / 7,007 / 73.2 / 125
19433 Renwick Rd., Lockport • (815) 836-4653 • www.prairiebluffgc.com Steve Lunde

Sanctuary 18: 72 / 6,917 / 72.5 / 131
485 N. Marley Rd., New Lenox • (815) 462-4653 • www.golfsanctuary.com Bob Schulz

Square Links 9: 30 / 1,749 / unrated
7861 W. St. Francis Rd., Frankfort • (815) 469-1600 • www.fspd.org Brian Zipse

Tamarack 18: 70 / 6,901 / 73.7 / 136
24032 Royal Worlington Dr., Naperville • (630) 904-4000 • www.tamarackgc.com Brett Hafstad (GM)

Tuckaway 18: 72 / 6,192 / 69.7 / 117
27641 Stony Island Ave., Crete • (708) 946-2259 • website inactive Jason Poblocki

University Park 18: 71 / 6,701 / 71.4 / 123
23520 Crawford Ave., University Park • (708) 747-0306 • www.universitygolfclub.com Bob Geppert

Wedgewood 18: 71 / 6,675 / TBA / TBA Reopening Memorial Day
5001 Caton Farm Rd., Joliet • (815) 741-7270 • www.jolietwedgewoodgc.com Jason Shook

Willow Run 9: 35 / 2,930 / 33.9 / 113
12600 W. 187th St., Mokena • (815) 485-2119 • www.willowrungolf.net Rich Wisslead (GM)

Woodruff 18: 68 / 5,424 / 66.1 / 114
621 N. Gougar Rd., Joliet • (815) 741-7272 • www.jolietwoodruffgc.com Kirk Blakney (GM)

MCHENRY COUNTY

Blackstone 18: 72 / 6,734 / 72.8 / 139
9700 St. Andrews Dr., Marengo • (815) 923-1800 • www.blackstonegc.com Susan Concialdi (GM)

Boone Creek Prairie/Creekside 18: 71 / 6,435 / 70.4 / 122
Valley 9: 35 / 2,883 / 33.9 / 115
6912 Mason Hill Rd., Bull Valley • (815) 455-6900 • www.boonecreekgolfclub.com Tyler Wollberg

Cary 18: 72 / 6,135 / 69.0 / 119
2400 Grove Ln., Cary • (847) 639-3161 • www.carycountryclub.com Bob Keith

Chalet Hills 18: 73 / 6,877 / 73.6 / 137
943 Rawson Bridge Rd., Cary • (847) 639-0666 • www.chalethillsgolfclub.com Brian Smith

Chapel Hill 18: 70 / 6,133 / 70.1 / 122
2500 N. Chapel Hill Rd., McHenry • (815) 385-3337 • www.chapelhillgolf.com Larry Piet (GM)

Craig Woods 9: 34 / 2,290 / 70.0 / 113
5815 S. Rt. 47, Woodstock • (815) 338-9781 • www.crystalwoodsgc.com

Crystal Woods 18: 72 / 6,427 / 70.6 / 128
5919 S. Rt. 47, Woodstock • (815) 338-3111 • www.crystalwoodsgc.com John Craig

Foxford Hills 18: 72 / 7,047 / 74.2 / 142
6800 S. Rawson Bridge Rd., Cary • (847) 639-0400 • www.foxfordhillsgolfclub.com Rob Sankey

Golf Club of Illinois 18: 71 / 7,011 / 74.4 / 137
1575 Edgewood Rd., Algonquin • (847) 658-4400 • www.golfclubofil.com Robert Lemke (GM)

Hunter 18: 72 / 6,381 / 69.2 / 115
5419 Kenosha St., Richmond • (847) 678-7940 • no website

Marengo Ridge 18: 72 / 6,654 / 72.5 / 129
9106 Harmony Hill Rd., Marengo • (815) 923-2332 • www.marengoridgegolfclub.com Bob Witek (GM)

Oak Grove 18: 71 / 7,021 / 75.0 / 142
16914 Oak Grove Rd., Harvard • (815) 648-2550 • www.oakgrovegolfcourse.com Tim Miles Jr. (GM)

Old Top Farm 9: 37 / 2,881 / 30.0 / 113
2120 Crystal Lake Rd., Crystal Lake • (815) 479-9361 • no website Scott Kerbs

Pinecrest 18: 72 / 6,604 / 71.5 / 123
11220 Algonquin Rd., Huntley • (847) 669-3111 • www.huntleyparks.org/parks-facilities/golf/ Mike Yackle

Pistakee 9: 36 / 3,029 / unrated
815 W. Bay Rd., McHenry • (815) 385-9854 • no website Jason Whitt (GM)

RedTail 18: 72 / 6,803 / 72.8 / 130
7900 Redtail Dr., Lakewood • (815) 477-0055 • www.redtailgolf.com Chris Neuhart

Waters Edge 18: 33 / 1,700 / unrated
4005 N. Rt. 23, Marengo • (815) 568-5983 • no website Mark Horan

Whisper Creek 18: 72 / 7,103 / 73.7 / 133
12840 Del Webb Blvd., Huntley • (847) 515-7680 • www.whispercreekgolf.com Christopher Strand

KANE COUNTY

Bliss Creek 18: 69 / 5,592 / 67.0 / 115
1 Golfview Rd., Sugar Grove • (630) 466-4177 • www.blisscreekgolf.com Gordon Pike (GM)

Bonnie Dundee 18: 69 / 6,015 / 68.1 / 112
270 Kennedy Dr., Carpentersville • (847) 426-5511 • www.bonnieundeegc.com Jim Opp

Bowes Creek 18: 71 / 6,917 / 73.2 / 142
1250 Bowes Creek Blvd., Elgin • (847) 214-5880 • www.bowescreekcc.com Mike Lehman

Deer Valley 9: 29 / 1,358 / unrated
46W994 Jericho Rd., Big Rock • (630) 556-3333 • www.deervalleygc.net

Fox Valley 18: 72 / 5,937 / 68.6 / 126
2500 N. River Rd., North Aurora • (630) 879-1030 • www.aurora-il.org/operations Jeff Schmidt

Highlands of Elgin 18: 72 / 6,961 / 73.8 / 136
875 Sports Way, Elgin • (847) 931-5950 • www.highlandsofelgin.com Jim Vogt

Hughes Creek 18: 72 / 6,506 / 71.6 / 127
1749 Spring Valley Dr., Elburn • (630) 365-9200 • www.hughescreek.com Sam Bradberry

Mill Creek 18: 71 / 6,420 / 71.4 / 135
39W525 Herrington Dr., Geneva • (630) 208-7272 • www.millcreekgolfcourse.com Craig Kight

Orchard Valley 18: 72 / 6,745 / 72.4 / 134
2411 W. Illinois Ave., Aurora • (630) 907-0500 • www.orchardvalleygolf.com Jim Tourloukis (GM)

Phillips Park 18: 71 / 6,186 / 69.8 / 121
1001 Hill Ave., Aurora • (630) 256-3760 • www.phillipsparkaurora.com Jeff Schmidt

Pottawatomie Park 9: 35 / 3,007 / 69.8 / 122
845 N. Second Ave., St. Charles • (630) 584-8356 • www.stcparks.org James Wheeler

Randall Oaks 18: 71 / 6,598 / 71.7 / 133
3: 9 / 300 apx.
4101 Binnie Rd., West Dundee • (847) 428-5661 • www.randalloaksgc.com Steve Gillie

Settler's Hill 18: 72 / 6,630 / 72.1 / 130 **Renovation; reopens 2022**
919 E. Fabyan Pkwy., Batavia • (630) 232-1636 • www.settlershill.com John O'Connor

Tanna Farms 18: 71 / 6,510 / 72.0 / 131
39W808 Hughes Rd., Geneva • (630) 232-4300 • www.tannafarms.com Chad Zipse

Valley Green 18: 60 / 3,841 / 70.0 / 113
314 Kingswood Dr., North Aurora • (630) 897-3000 • www.valleygreengc.com

Wing Park 9: 36 / 3,077 / 70.8 / 115
1000 Wing St., Elgin • (847) 931-5952 • www.cityofelgin.org Bill Eubanks

Wolf Run 9: 64 / 4,229 / 70.0 / 113
1700 Jericho Rd., Aurora • (630) 906-1402 • www.wolfrungolfcourse.net Roger Wolf (GM)

KENDALL COUNTY

Blackberry Oaks 18: 72 / 6,404 / 71.3 / 134
2245 Kennedy Rd., Bristol • (630) 553-7170 • www.blackberryoaks.com

Cedardell 9: 35 / 3,029 / 69.4 / 127
14264 S. Hale St., Plano • (630) 552-3242 • www.cedardellgolfclub.com Terry Donahue

Fox Bend 18: 72 / 6,890 / 73.1 / 130
3516 U.S. Hwy 34, Oswego • (630) 554-3939 • www.foxbendgolfcourse.com Brad Doyle (GM)

Whitetail Ridge 18: 71 / 6,524 / 71.0 / 128
7671 Clubhouse Dr., Yorkville • (630) 882-8988 • www.whitetailridge.us Patrick MacDonald

KANKAKEE COUNTY

Aspen Ridge 18: 70 / 6,191 / 69.6 / 119
1763 E. 4000 N Rd., Bourbonnais • (815) 939-1742 • www.aspenridgegolf.com Leo Ciaccio (GM)

Cardinal Creek
Center / South 18: 72 / 6,423 / 70.0 / 122
North 9: 36 / 3,274 / 35.1 / 122
615 S. Dixie Hwy., Beecher • (708) 946-2800 • www.cardinalcreekgolfclub.com

High Point 9: 27 / 3,263 / 70.8 / 116
309 High Point Dr., Essex • (815) 365-4000 • www.golfhighpoint.com Debra Deegan

Kankakee Elks 18: 71 / 6,430 / 71.1 / 120
2283 Bittersweet Dr., Aroma Park • (815) 937-9547 • www.elksgolf627.com Kyle Morris

Manteno 18: 72 / 6,462 / 70.8 / 120
7202 N. 4000 E Rd., Manteno • (815) 468-8827 • www.mantenogolf.com C.J. Wade (GM)

Minne Monesse 18: 72 / 6,357 / 70.7 / 126
15944 E. Six Mile Grove Rd., Grant Park • (815) 465-6653 • www.minnemonesse.com Debra Hurley

Oak Springs 18: 72 / 6,260 / 70.0 / 122
6740 E. 3500 S Rd., St. Anne • (815) 937-1648 • www.oakspringsgolf.com Sam Ortman (GM)

Shamrock 18: 60 / 3,357 / 65.0 / 107
6575-B E. Rt. 17, Aroma Park • (815) 937-9355 • golfshamrock.com Gene Smith

South Shore 18: 72 / 6,200 / 68.9 / 122
1727 N. River South Rd., Momence • (815) 472-4407 • website inactive

LAKE COUNTY / INDIANA

Cedar Creek 9: 31 / 1,741 / 66.5 / 104
10483 W. 109th Ave., Cedar Lake • (219) 365-2902 • www.lakecountyparks.com Tom Zimmerman

Centennial Park 9: 36 / 3,300 / 72.4 / 132
1005 S. Centennial Dr., Munster • (219) 836-6931 • www.munster.org Matt Meneghetti

Indian Ridge 18: 72 / 6,217 / 69.1 / 110
6363 Grand Blvd., Hobart • (219) 942-6850 • www.hegangolf.com Chuck Hegan (GM)

Lost Marsh 18: 72 / 6,872 / 72.0 / 128
9: 27 / 2,600 / unrated
1001 E. 129th St., Hammond • (219) 932-4046 • www.lostmarshgolf.com Niko Sullivan

MacArthur 9: 27 / 1,390 / unrated
4000 Indianapolis Blvd. (at 140th St.), East Chicago • (219) 391-8362 • no website

Oak Knoll 18: 70 / 5,703 / 67.3 / 107
11200 Whitcomb St., Crown Point • (219) 663-3349 • www.hegangolf.com Dave Steuer (GM)

Palmira 18: 72 / 6,921 / 72.7 / 122
12111 W. 109th St., St. John • (219) 365-4331 • www.palmiragolf.com Rich Nicpon (GM)

Pheasant Valley 18: 72 / 6,869 / 72.3 / 126
3838 W. 141st Ave., Crown Point • (219) 663-5000 • www.hegangolf.com Pat Hedge

River Pointe Points 9: 36 / 3,256
Pines 9: 36 / 3,167
Ponds 9: 36 / 3,299
6700 Country Club Rd., Hobart • (219) 942-2747 • www.whitehawkcountryclub.com/river-pointe

Scherwood 18: 71 / 6,849 / 73.4 / 125
9: 30 / 1,463 / unrated
600 E. Joliet St., Schererville • (219) 865-2554 • www.scherwood.com Marv Hanson

South Gleason Park 18: 71 / 6,312 / 68.5 / 108
3400 Jefferson St., Gary • (219) 980-1089 • www.gary.in.us/parks/golf.asp Nymrod Adkins

South Shore 18: 70 / 5,466 / 67.0 / 118
14400 Lake Shore Dr., Cedar Lake • (219) 374-6070 • www.golfssc.com/ Dennis Scaggs

Summertree 18: 72 / 6,596 / 71.9 / 124
2323 E. 101st Ave., Crown Point • (219) 663-0800 • www.hegangolf.com

Turkey Creek 18: 70 / 6,202 / 69.3 / 118
6400 Harrison St., Merrillville • (219) 980-5170 • www.turkeycreekgolf.com Chris Cioroianu

White Hawk Grey / Black 18: 72 / 7,011 / 73.9 / 141
Red / Silver 18: 72 / 7,201 / 75.1 / 139
1001 White Hawk Dr., Crown Point • (219) 661-2323 • www.whitehawkcountryclub.com Drew Brining

Wicker Memorial Park 18: 72 / 6,887 / 72.6 / 122
8554 Indianapolis Blvd., Highland • (219) 838-9809 • www.wickermemorialpark.com Bill Springer

ILLINOIS OUTLYING NORTHWEST GALENA TO ROCKFORD / DEKALB

Aldeen 18: 72 / 7,131 / 74.7 / 139
1900 Reid Farm Rd., Rockford • (815) 282-4653 • www.aldeengolfclub.com Dennis Geddes

Alpine Hills 5: remodeled for junior golf
4402 Larson Ave., Rockford • (815) 966-8737 • http://rockfordparkdistrict.org/alpinehills

Apple Canyon Lake 9: 36 / 3,280 / 70.1 / 110
14A200 Canyon Club Dr., Apple River • (815) 492-2477
http://www.applecanyonlake.org/amenities/golf.php

Atwood Homestead 18: 72 / 7,431 / 74.7 / 127
8990 Old River Rd., Rockford • (815) 623-2411 • www.winnebagoountygolf.com

Beaver Creek 9: 35 / 3,033 / unrated
19619 Leroy Center Rd., Capron • (815) 569-2427 • http://www.beavercreekgolf.com/

Blackhawk Run 18: 72 / 6,378 / 72.0 / 127
3501 S Golf Rd., Stockton • (815) 947-3011
http://www.galena.org/places/black-hawk-run-golf-course/

Brush Creek 9: 36 / 3,218 / unrated
2001 W Saint James Rd., Orangeville • (815) 789-4042 • http://www.brushcreekgolf.com/

Winnebago 9: 36 / 3,218 / unrated
2001 W Saint James Rd., Orangeville • (815) 789-4042 • http://www.brushcreekgolf.com/

Buena Vista 131 Buena Vista Dr., DeKalb • (815) 758-4812 • www.dekalbparkdistrict.com	9: 32 / 2,477 / 31.3 / 53	DeKalb Russ Robinson
Chicago Golf & Tiki Tees 210 S. Pointe Ct, DeKalb • (815) 517-1449 • http://chicagogolfandtikitees.com/	9: 34 / 2,690 / unrated	DeKalb
Cross Creek 15523 Henry Rd., Morrison • (815) 772-7966 • http://www.crosscreekgolfandestates.com/	9: 36 / 2,958 / 33.5 / 103	Whiteside
Deer Valley 3298 Hoover Rd., Deer Grove • (815) 438-4653 • www.dvforegolf.com	Deer Valley 18: 71 / 6,415 / 70.7 / 124 Par 3 9: 27 / 715 / unrated	Whiteside Chris Sandell
Eagle Ridge Resort & Spa Hwy. 20 at Galena Territory, Galena • (815) 777-5000 • www.eagleridge.com	General 18: 72 / 6,820 / 73.2 / 142 North 18: 72 / 6,836 / 73.2 / 134 South 18: 72 / 6,862 / 73.7 / 140 East 9: 34 / 2,648 / 66.0 / 117	Jo Daviess Ikhlas Ahmed
Emerald Hill 16802 Prairieville Rd., Sterling • (815) 622-6204 • www.emeraldhillgolf.com	18: 72 / 6,318 / 70.3 / 121	Whiteside Kristen Wegmann (GM)
Fairways 555 S. Seventh St., Rochelle • (815) 562-6666 • www.rochellecountryclub.com	18: 66 / 4,649 / 64.4 / 104	Ogle Randy Mershon
Galena 11557 W US Highway 20, Galena • (815) 777-3599 • http://galenagolf.webs.com	18: 71 / 6,571 / 71.5 / 116	Jo Daviess
Ingersoll 101 Daisyfield Dr., Rockford • (815) 987-8834 • www.rockfordparks.org	18: 71 / 6,107 / 68.9 / 111 Youth 4: par up to player	Winnebago Nancy Joan Kauzlarich
Lacoma 8080 Timmerman Dr., East Dubuque • (815) 747-3874 • http://lacomagolf.com/	Blue 18: 71 / 6,814 / 72.7 / 123 Red / Gold 18: 71 / 5,663 / 68.0 / 114 Par 3 9: 27 / 1,000 / unrated	Jo Daviess
Lake Carroll 2911 Ironwood Dr., Lanark • (815) 493-2808 • www.visitlakecarroll.com	18: 72 / 6,418 / 71.6 / 130	Carroll
Lake Erie 900 Lakeside Dr., Erie • (309) 659-2250 • www.lakeeriecountryclub.com	9: 36 / 3,069 / 34.4 / 108	Whiteside
Ledges 7111 McCurry Rd., Roscoe • (815) 389-0979 • www.winnebagocountygolf.com	18: 72 / 6,740 / 72.5 / 129	Winnebago Steven Hare
Lost Nation 6931 S. Lost Nation Rd., Dixon • (815) 652-4212 • www.lostnationgolf.com	18: 71 / 6,222 / 69.5 / 114	Lee Brian Goad
Macktown 2221 Freeport Rd., Rockton • (815) 624-7410 • www.winnebagocountygolf.com	18: 71 / 5,756 / 67.9 / 112	Winnebago
Newburg Village 253 Club House Dr., Cherry Valley • (815) 332-9002 • www.newburgvillage.net/	9: 36 / 3,134 / 70.0 / 121	Winnebago
Palisades 18280 Ill. Rt. 84, Savanna • (815) 273-2141 • http://palisadesgolfcourse.com/	9: 33 / 2,369 / 62.2 / NA	Carroll
Park Hills 3240 W Stephenson St., Freeport • (815) 235-3611 • www.parkhillsgolfcourse.com	East 18: 72 / 6,477 / 69.9 / 116 West 18: 72 / 6,627 / 71.3 / 121	Stephenson
Timber Pointe 5750 Woodstock Rd., Poplar Grove • (815) 544-1935 • www.golfthepointe.com	18: 72 / 7,077 / 73.8 / 125	Boone Randy Schairer
Prairie Pines 6236 State Rd. 38, DeKalb • (815) 758-5249 • www.prairiepinesgolf.com	9: 34 / 2,465 / 28.0 / 113	DeKalb

PrairieView 7993 N. River Rd., Byron • (815) 234-4653 • www.prairieviewgolf.com	18: 72 / 7,135 / 73.5 / 133	Ogle
Prophet Hills 4319 Bishop Rd., Prophetstown • (815) 537-5226 • www.prophethills.com	9: 35 / 3,040 / 67.6 / 106	Whiteside Jodi Farral (GM)
Red Barn 12379 Wagon Wheel Rd., Rockton • (815) 624-8037 • www.redbarngolfcourse.com	9: 32 / 2,120 / 28.0 / 113	Winnebago
River Heights 1100 S. Annie Glidden Rd., DeKalb • (815) 758-1550 • www.riverheightsgc.com	18: 72 / 6,528 / 70.8 / 126	DeKalb Roger Huber
Rock River Golf & Pool 3901 Dixon Ave., Rock Falls • (815) 625-2322 • www.rockriversupperclub.com/golf	18: 70 / 5,920 / 69.2 / 123	Whiteside
Sandburr Run 5020 Illinois Rt. 84, Thomson • (815) 902-6063 • website inactive	9: 36 / 3,047 / unrated	Carroll
Sandy Hollow 2500 Sandy Hollow Rd., Rockford • (815) 987-8836 www.rockfordparkdistrict.org/sandy-hollow	18: 71 / 6,228 / 69.3 / 115	Winnebago Nancy Joan Kauzlarich
Savannah Oaks of Candlewick Lake 100 Savannah Ridge Dr., Poplar Grove • (815) 765-0111 • http://candlewicklake.org/	9: 35 / 2,925 / NA	Boone
Sinnissippi 1401 N. Second St., Rockford • (815) 987-8838 • www.rockfordparks.org	9: 37 / 3,230 / 35.5 / 130	Winnebago
Stagecoach 621 W Lena St., Lena • (815) 369-2222 • no website	9: 35 / 2,653 / 34.3 / 110	Stephenson
Storybrook 2124 W Storybrook Rd., Hanover • (815) 591-2210 • http://storybrook.com/	18: 72 / 6,194 / 69.6 / 118	Jo Daviess Mike Dascher (GM)
Shady Oaks 577 U.S. Hwy. 52, Sublette • (815) 849-5424 • www.shadyoaksgcc.com	18: 71 / 6,212 / 69.6 / 123	Lee
Sunset 216 Sunset Hill, Mount Morris • (815) 734-4839 • www.sunsetgolfmm.com	9: 36 / 3,169 / 69.5 / 115	Ogle
Swan Hills 2600 Gustafson Rd., Belvidere • (815) 547-3232 • no website	18: 71 / 6,359 / 71.0 / 113	Winnebago Catherine Beaves
Sycamore 940 E. State St., Sycamore • (815) 895-3884 • www.sycamoreparkdistrict.com	18: 71 / 5,993 / 68.0 / 114	DeKalb Kirk Lundbeck
Timber Creek 729 Timber Creek Rd., Dixon • (815) 288-5110 • www.timbercreekdixon.com	18: 71 / 6,504 / 71.6 / 126	Lee
Westlake Village 3820 Westlake Village Dr., Winnebago • (815) 335-7177 • http://golfwestlake.com/	18: 71 / 6,881 / 70.0 / 113	Winnebago
Woodbine Bend 3500 E Center Rd., Stockton • (815) 858-3939 • www.woodbinebend.com	18: 72 / 6,563 / 71.8 / 124	Jo Daviess
Wolf Hollow / Lena 6546 N. Shippee Rd., Lena • (815) 369-5513 • www.wolfhollowgolf.net	18: 71 / 6,408 / 70.9 / 122	Stephenson

QUAD CITIES ROCK ISLAND TO MONMOUTH

Baker Park 1095 Cambridge Rd., Kewanee • (309) 852-2872 • http://kewanee-parkdistrict.org/golf/	18: 71 / 6,170 / 68.7 / 112	Henry
---	------------------------------------	--------------

Bunker Links 3500 Lincoln Park Dr., Galesburg • (309) 344-1818 www.ci.galesburg.il.us/services/bunker_links_golf/	18: 71 / 6,036 / 68.7 / 116	Knox
Byron Hills 23316 94th Ave. N, Port Byron • (309) 523-2664 • www.byronhills.com	18: 71 / 6,465 / 70.5 / 115	Rock Island
Champion at Hillcrest Resort 16260 E. 350th St., Orion • (309) 755-6550 • http://hillcresteventcenter.com	9: 30 / 1,848 / unrated	Henry
Country View 8492 N. 2300th Ave., Geneseo • (309) 441-5272 • https://countryviewgolfcourse.net	9: 35 / 2,865 / unrated	Henry
Fyre Lake 1402 Lakeview Ct., Sherrard • (309) 644-4575 • www.fyrelakegolf.com	18: 70 / 6,505 / 72.1 / 130	Mercer
Gibson Woods Monmouth Park, Monmouth • (309) 734-9968 • www.gibsonwoods.com	18: 71 / 6,362 / 70.9 / 119	Knox
Golfmohr 16724 Hubbard Rd., East Moline • (309) 496-2434 • www.golfmohr.com	18: 72 / 6,855 / 71.4 / 124	Rock Island
Highland Springs 9500 35th St. W, Rock Island • (309) 732-7265 • www.rigov.org	18: 72 / 6,777 / 70.2 / 129	Rock Island Todd Winter (GM)
Indian Bluff 6200 78th Ave., Milan • (309) 799-3868 • www.indianbluffgolfcourse.com	18: 70 / 5,700 / 67.6 / 113	Rock Island
Kewanee Dunes 3536 Midland Rd., Kewanee • (309) 852-4508 • www.kewaneedunes.com	18: 72 / 6,832 / 72.4 / 130	Henry Colby Horsley (GM)
Maple Bluff E. 1600 St., Geneseo • (309) 944-5418 • www.golffmaplebluffgeneseo.com	18: 72 / 6,569 / 71.1 / 121	Henry Dennis Peck (GM)
Oak Run 1468 Knox Rd., 1725 N., Dahinda • (309) 879-2582 • www.oakrunpublicgolfcourse.com	18: 71 / 6,417 / 68.5 / 115	Knox
Saukie Municipal 3101 38th St., Rock Island • (309) 732-2278 • http://rigov.org/294/Saukie-Golf-Course	18: 66 / 5,152 / 63.4 / 92	Rock Island
TPC at Deere Run 3100 Heather Knoll, Silvis • (309) 796-6000 • www.tpc.com/tpc-deere-run	18: 71 / 7,258 / 75.8 / 144	Rock Island Brian DeJohn

NORTH CENTRAL LASALLE-PERU TO BLOOMINGTON

Anderson Fields 1901 N. Bloomington St., Streator • (815) 672-3702 • www.ci.streator.il.us/anderson-fields.php	9: 35 / 2,688 / unrated	LaSalle
Blue Grass Creek 10521 Boston School Rd., Minier • (309) 392-2094 • no website	18: 36 / 3,048 / 35.0 / 113	Tazewell
The Bourne 2359 N. 35th Rd., Norway • (815) 496-2301 • no website	18: 72 / 6,355 / 70.0 / 123	LaSalle Deb Rollo
Coyote Creek 8201 W. Lancaster Rd., Bartonville • (309) 633-0911 • http://golfcoyotecreek.com/	18: 72 / 6,701 / 72.3 / 135	Peoria
Dayton Ridge 3076 E. 18th Rd., Ottawa • (815) 434-0145 • no website	18: 36 / 3,050 / 35.1 / 116	LaSalle
The Den at Fox Creek 3002 Fox Creek Rd., Bloomington • (309) 434-2300 • www.thedengc.com	18: 72 / 6,926 / 73.3 / 134	McLean Jason Wingate
Detweiler Park 8412 N. Galena Rd., Peoria • (309) 692-7518 • www.ppdgolf.org/detweiler	9: 29 / 1,758 / 55.1 / unslodped	Peoria

Dwight 31577 N 2400 E Rd, Dwight • (815) 584-9825 • www.dwightcountryclub.com	18: 72 / 6,306 / unrated	Livingston
Earlville 400 Oak St., Earlville • (815) 246-9329 • no website	9: 32 / 2,442 / 35.5 / 114	LaSalle
Eastwood 2000 Eastwood Ave., Streator • (815) 673-5553 • www.eastwoodtwincreeks.com/eastwood	9: 36 / 3,132 / 35.0 / 120	LaSalle
Edgebrook Suydam Rd., Sandwich • (815) 786-3058 • www.sandwichgolf.com	18: 72 / 6,294 / 70.9 / 126	DeKalb Clyde Henning
Edgewood Park RR 89, McNabb • (815) 882-2317 • www.edgewoodparkgolfclub.com	18: 72 / 6,621 / 70.9 / 117	Putnam Ray DeFrank (GM)
El Paso 2860 County Rd. 600 N., Kappa • (309) 527-5225 • www.elpasogolfclub.com	18: 71 / 6,111 / 69.6 / 125	Woodford
Fairlakes 2203 County Rd. 600 N., (S. of) Secor • (309) 744-2222 • http://fairlakesgc.weebly.com	18: 67 / 5,207 / 66.4 / 102	Woodford
Fon du Lac 123 Par 3 Ln., East Peoria • (309) 699-3923 www.fondulacpark.com/facilities/fondulac-golf-course	9: 27 / 1,255 / 28.0 / 110	Tazewell
Four Willows 34323 E. 1000 N., Mason City • (217) 482-3349 • no website	9: 35 / 2,911 / unrated	Mason
Green River 15212 Illinois Highway 92, Walnut • (815) 379-2227 • no website	9: 34 / 2,743 / unrated	Bureau
Hazy Hills 25258 N. 1350 East Rd., Hudson • (309) 726-9600 • www.hazyhillsgolf.com	9: 35 / 2,900 / unrated	McLean
Hidden Lake 12985 350 East St., Sheffield • (815) 454-2660 • www.hiddenlakegolfclub.com Pete Macnaughton	18: 70 / 5,735 / 67.1 / 115	
Highland Park 1613 S. Main St., Bloomington • (309) 434-2200 http://4.17.232.139/parks/golf-courses/Highland-Park/general-info.htm	18: 70 / 5,597 / 66.8 / 116	McLean
Hillcrest 1829 Washington Rd., Washington • (309) 444-9033 • http://hillcrestgolfcenter.com	18: 59 / 3,095 / unrated	Tazewell
Hunter's Ridge 12927 Ill. Hwy. 26, Princeton • (815) 879-6531 • www.huntersridgegc.com	18: 72 / 6,337 / 70.5 / 125	Bureau Wanda Nelson
Indian Creek 7429 N. 2200 E. Rd., Fairbury • (815) 692-2655 • http://indiancreekcc.net	9: 36 / 2,920 / 34.6 / 116	Livingston
Indian Hills 9468 1725 E. St., Tiskilwa • (815) 646-4856 • no website	18: 35 / 2,846 / 33.3 / 105	Bureau
Indian Oaks 603 E. Preserve Rd., Shabbona • (815) 824-2282 • www.indianoakscountryclub.com	9: 36 / 3,345 / 71.8 / 118	DeKalb
Indian Springs 36846 Comanche Dr., Saybrook • (309) 475-4111 • www.golfatindiansprings.net (inactive)	9: 36 / 3,180 / 71.8 / 119	McLean
Ironwood 1901 N. Towanda Ave., Normal • (309) 454-9620 • www.golfironwood.org	18: 72 / 6,990 / 72.5 / 122	McLean
Kaufman Park 800 W. Center St., Eureka • (309) 467-2523 • http://kaufmanpark.com/	9: 34 / 2,725 / 66.2 / 113	Woodford
Kellogg 7716 N. Radnor Rd., Peoria • (309) 691-0293 • http://www.ppdgolf.org/kellogg/	Kellogg 18: 72 / 6,755 / 71.9 / 129 Executive 9: 34 / 2,901 / 33.7 / 114	Peoria

Lacon 1400 State Rt. 17, Lacon • (309) 246-7650 www.facebook.com/Lacon-Country-Club -883831921643806/	9: 35 / 2,790 / 68.0 / 110	Marshall
Lakewood Rt. 78, Bath • (309) 546-2274 • www.facebook.com/lakewoodgolfclub4	9: 36 / 3,365 / 35.7 / 119	Mason
LeRoy 27307 Rt. 150, LeRoy • (309) 962-3421 • website inactive	9: 36 / 3,000 / 33.4 / 105	McLean
Lick Creek 2210 N. Parkway Dr., Pekin • (309) 346-0077 • www.pekinparkdistrict.org	18: 72 / 6,910 / 73.5 / 137	Tazewell
Links At Ireland Grove 3807 Ballyunion Rd., Bloomington • (309) 661-8040 • www.thelinksatirelandgrove.com/	9: 29 / 1,575 / unrated	McLean
Madison Park 2735 Dr. Martin Luther King Jr. Dr., Peoria • (309) 673-7161 • www.ppdgolf.org/madison/	18: 69 / 5,476 / 64.5 / 96	Peoria
Mendota 35666 Rt. 34 W., Mendota • (815) 538-7241 • www.mendotagolfclub.com/	18: 70 / 6,186 / 69.5 / 117	LaSalle
Metamora Fields 801 Progress St., Metamora • (309) 367-4000 • www.metamorafields.com	18: 71 / 7,023 / 74.1 / 130	Woodford Jeff Roche
Nettle Creek 5355 N. Saratoga Rd., Morris • (815) 941-4300 • www.nettlecreek.com	18: 71 / 6,562 / 72.1 / 130	Grundy Kurt Nolen
Newman 2021 W. Nebraska Ave., Peoria • (309) 674-1663 • www.ppdgolf.org/newman/	18: 71 / 6,908 / 72.9 / 132	Peoria
Parkview 2300 Broadway St., Pekin • (309) 346-8494 • www.parkviewgolfcourseil.com/	18: 70 / 6,002 / 65.4 / 102	Tazewell
Pine Hills 1667 N. 2501st Rd., Ottawa • (815) 434-3985 • www.ottawapinehillsgolfclub.com	9: 35 / 3,203 / 72.0 / 122	LaSalle
Pine Lakes RR 2, Washington • (309) 745-9344 • www.golfpinelakesgc.com	18: 71 / 6,385 / 70.3 / 122	Tazewell
Pontiac Elks Rt. 116 W at Elks Club Rd. (east of I-55), Pontiac • (815) 842-1249 • www.pontiacelks.com	18: 72 / 6,804 / 73.0 / 132	Livingston
Prairie Lake 2550 N 32nd Rd., Marseilles • (815) 795-5107 • no website	9: 37 / 3,218 / 35.4 / 114	LaSalle
Prairie Vista 502 W. Hamilton Rd., Bloomington • (309) 434-2217 http://4.17.232.139/parks/golf-courses/Prairie-Vista/general-info.htm	18: 72 / 6,745 / 72.2 / 129	McLean
Quail Meadows 2215 Centennial Dr., Washington • (309) 694-3139 • www.quailmeadowsgolf.com	18: 72 / 6,916 / 72.9 / 124	Tazewell
Senica's Deer Park 100 Deer Park Ln., Oglesby • (815) 667-4239 • no website	18: 71 / 6,378 / 70.6 / 120	LaSalle Jesse Cavanaugh
Senica's Oak Ridge 658 U.S. Hwy. 6, LaSalle • (815) 223-7273 • www.senicasoakridge.net	18: 72 / 6,830 / 72.1 / 131	LaSalle Jesse Cavanaugh
Shagbark 1262 N 640 E Rd, Onarga • (815) 268-7308 • www.shagbarkgolf.com	9: 36 / 2,867 / 32.5 / unsloped	Iroquis
Silver Ridge 3069 N. Hill Rd., Oregon • (815) 734-4440 • no website	18: 72 / 7,005 / 73.5 / 130	Ogle Jason Wombacher
South Bluff 229 N. 2550th Rd., Peru • (815) 223-0603 • www.southbluff.net	9: 36 / 2,851 / 33.2 / 106	LaSalle
Spring Creek 286 Spring Creek Dr., Spring Valley • (815) 894-2137 • www.springcreek-golfcourse.com	18: 72 / 6,225 / 71.9 / 125	Bureau

Sunset Hills 1620 Summit Dr., Pekin • (309) 347-7553 • www.mashiespub.com	18: 71 / 6,649 / 71.9 / 129	Tazewell
Swan Creek 1189 Golf Course Rd., Avon • (309) 465-3127 • www.swancreekgolfclub.com	18: 72 / 6,814 / 72.7 / 127	Fulton
Twin Creeks 30396 N. 700 E. Rd., Manville • (815) 642-4220 • www.eastwoodtwincreeks.com/twin-creeks	9: 36 / 3,036 / 69.7 / unsloped	Livingston
Wyaton Hills 17879 1500 North Ave., Princeton • (815) 872-2641 • no website	9: 36 / 3,071 / 66.8 / 117	Bureau Max Hallberg Jr.
WeaverRidge 5100 WeaverRidge Blvd., Peoria • (309) 691-3344 • www.weaveridge.com	18: 72 / 7,030 / 73.1 / 136	Peoria Clay Stevens
Weibring at Illinois State 800 Gregory St., Normal • (309) 438-8065 • www.isugolf.com	18: 72 / 6,915 / 72.7 / 131	McLean Laura Provost
Wolf Creek 21062 N 1850 East Rd., Cayuga • (815) 842-9008 • www.golfatwolfcreek.com	18: 72 / 6,637 / 69.1 / 117	Livingston

WEST CENTRAL QUINCY TO JACKSONVILLE

Arrowhead Heights 1403 S. Main St., Camp Point • (217) 593-6619 • http://arrowheadheights.com	18: 72 / 6,420 / 70.7 / 125	Adams
Bow Lake 1500 William R. Croxville Dr., Barry • (217) 335-7043 • www.bowlakegolf.com	18: 35 / 2,820 / 33.3 / 106	Pike
Carthage 1561 N. County Rd. 1830, Carthage • (217) 357-3625 • www.carthagegolfclub.com	9: 35 / 2,805 / 33.5 / unsloped	Hancock
Cedar Crest 3312 N. 36th St., Quincy • (217) 223-1210 • www.cedarcrestquincy.com	9: 36 / 3,054 / 67.6 / 111	Adams
Deer Run 1 Deer Run Dr., Hamilton • (217) 847-3623 www.facebook.com/pages/Deer-Run-Golf-Course/113877965310098	18: 72 / 6,073 / 69.7 / 120	Hancock
Gold Hills 10980 E. 900th St., Colchester • (309) 837-2930 • www.gold-hills.com/main_menu.htm	18: 70 / 6,540 / 69.9 / 115	McDonough
Knights of Columbus Par 3 700 S. 36th St., Quincy • (217) 222-4105 • http://www.quincykofo.org/sportsmenu/11-golf	9: 27 / 897 / unrated	Adams
Lamoine Valley W. Archer at N. E. St., La Harpe • (217) 659-3918 • no website	9: 27 / 2,568 / unrated	Hancock
Links at Jacksonville 319 Holkenbrink Dr., Jacksonville • (217) 479-4663 • www.linksofjacksonville.com	18: 72 / 6,836 / 72.1 / 122 Executive 9: 27 / 2,463 / unrated	Morgan
Mussatto at W. Illinois 1215 Tower Rd., Macomb • (309) 298-3676 • www.wiu.edu/student_services/golf_course/	18: 72 / 6,862 / 73.6 / 136	McDonough
Northridge Hills 1265 Sandusky Rd., Jacksonville • (217) 243-4241 • www.northridgehills.com (inactive)	9: 32 / 2,316 / 31.2 / 104	Morgan
Plum Creek 1135 Golf Course Rd., Winchester • (217) 742-9018 • no website	9: 36 / 3,150 / 34.9 / 114	Scott
Rolling Greens Rt 99 N., Mount Sterling • (217) 773-3085 • www.rollinggreensbc.com	18: 72 / 6,715 / unrated	Brown
Scripps Park RR 2, Rushville • (217) 322-4444 • no website	18: 70 / 5,660 / 66.7 / 107	Schuyler

Shaw Creek 300 1/2 Miller St., Bushnell • (309) 772-3422 • <i>no website</i>	9: 36 / 2,917 / unrated	McDonough
Tri County Off Hwy. 61, Augusta • (309) 458-3226 www.facebook.com/Tri-County-Golf-Course-85700863251/	9: 34 / 2,637 / unrated	Hancock
Twin Oaks 800 W. Adams St., Blandinsville • (309) 652-9519 • <i>no website</i>	9: 35 / 3,004 / unrated	McDonough
Westview 2150 S. 36th St., Quincy • (217) 223-7499 • www.westviewgolf.com	Glasgow 18: 71 / 6,400 / 69.7 / 117 Course 2 9: 35 / 3,057 / 68.8 / 112	Adams David Morgan

MID CENTRAL SPRINGFIELD TO DANVILLE

Bent Tree 14618 E. County Rd. 400 N., Charleston • (217) 348-1611 • <i>no website</i>	18: 70 / 6,240 / unrated	Coles
Bergen 200 Eastdale Ave., Springfield • (217) 753-6211 http://springfieldparkdistrictgolf.org/bergen.html	18: 35 / 2,657 / 32.4 / 97	Sangamon
Brookhill 3150 County Rd 1700 E, Rantoul • (217) 893-1200 • www.gplfbrookhillgc.com	18: 72 / 6,597 / 71.3 / 125	Champaign
Brookhills 5350 Old Jacksonville Rd., Springfield • (217) 787-8576 • <i>no website</i>	18: 31 / 1,918 / 29.8 / 90	Sangamon
Bunn 2500 S. 11th St., Springfield • (217) 522-2633 • http://springfieldparkdistrictgolf.org/bunn.html	18: 72 / 6,297 / 70.2 / 122	Sangamon
Country Hills 21723 Smoot St., Greenvier • (217) 632-7242 • www.countryhillsgc.com	18: 72 / 6,414 / 70.0 / 119	Menard
Eagle Ridge (Sycamore Hills) 928 Clinton Rd., Paris • (217) 463-3434 • www.eagleridgeparis.com	18: 6,589 / 72.2 / 124	Edgar
Edgewood 16497 Kennedy Rd., Auburn • (217) 438-3221 • www.golfedgewood.com	18: 71 / 6,667 / 71.9 / 128	Sangamon
Fox Prairie 3035 Co. Hwy. 38, Windsor • (217) 459-2805 • www.foxprairiegolf.com	18: 71 / 6,712 / 71.8 / 128	Shelby
Harrison Park 1300 W. Voorhees St., Danville • (217) 431-2266 • www.harrisonparkgolfcourse.com	18: 71 / 6,111 / 70.3 / 119	Vermilion
Hickory Point 727 W. Weaver Rd., Forsyth • (217) 421-7444 www.decatour-parks.org/golf/hickory-point-golf-club/	18: 72 / 6,848 / 72.3 / 127	Macon
Hubbard Trail 13937 E. 3680 North Rd., Hoopston • (217) 748-6521 • www.hubbardtrail.com	9: 36 / 3,042 / unrated	Vermilion
Ironhorse 2000 Ironhorse Dr., Tuscola • (217) 253-6644 • www.ironhorsegc.com	18: 72 / 7,131 / 73.0 / 125	Douglas
Lake of the Woods Hartwell C. Howard Par 3 405 N. Lake Of The Woods Rd., Mahomet • (217) 586-2183 • www.golflakelake.com	18: 72 / 6,578 / 71.2 / 125 9: 27 / 865 / unrated	Champaign
Lake Shore 1460 E. 1000 North Rd., Taylorville • (217) 824-5521 • https://golflakeshore.com	18: 72 / 6,778 / 72.0 / 117	Christian
Legends of Champaign 4551 Nicklaus Dr., Champaign • (217) 863-2145 • www.legendsofchampaign.com	18: 29 / 1,479 / unrated	Champaign

Lincoln Elks RR 4, Box 25, Lincoln • (217) 732-4010 • www.elks914.org/Golf.aspx	18: 71 / 6,200 / 68.6 / 120	Logan
Lincoln Greens 700 E. Lake Dr., Springfield • (217) 786-4111 http://springfieldparkdistrictgolf.org/lincoln-greens.html	18: 72 / 6,869 / 72.7 / 127	Sangamon
Long Bridge 1055 W. Camp Sangamo Rd., Springfield • (217) 744-8311 • www.longbridgegolf.com	18: 36 / 2,834 / 33.4 / 107	Sangamon
Marshall 110 Golf Course Rd., Marshall • (217) 826-2404 • <i>no website</i>	9: 35 / 2,747 / 32.7 / 110	Clark
Meadowview 6489 Meadowview Ln., Mattoon • (217) 258-7888 • https://meadowviewgolf.com	18: 72 / 6,745 / 72.6 / 121	Coles
Moweauqua 2598 E. 1900 North Rd., Moweauqua • (217) 768-3411 • http://moweauquagolfcourse.com	18: 72 / 6,307 / 69.3 / 112	Christian
National at Eagle Creek Eagle Creek State Park, Findlay • (217) 756-5550 • www.golfateaglecreek.com	18: 72 / 6,924 / 73.5 / 134	Shelby
North Greens 901 NE 1st St., Atlanta • (217) 648-5500 • https://m.facebook.com/northgreens/	9: 36 / 3,390 / 72.0 / 125	Logan
Oak Terrace Resort 100 Beyers Lake, Pana • (217) 651-4250 • https://oakterraceresort.com/golf	18: 72 / 6,375 / 70.5 / 123	Christian
The Oaks 851 Dave Stockton Dr., Springfield • (217) 528-6600 • www.theoaksgolfcourse.com	18: 70 / 6,130 / 68.8 / 117	Sangamon
Pasfield 1700 W. Lawrence Ave., Springfield • (217) 698-6049 http://springfieldparkdistrictgolf.org/pasfield.html	9: 34 / 2,299 / 30.8 / 89	Sangamon
Piper Glen 7112 Piper Glen Dr., Springfield • (217) 483-6537 • www.piperglen.com	18: 72 / 7,005 / 73.5 / 132	Sangamon Audra Burks
The Rail 1400 S. Club House Dr., Springfield • (217) 525-0365 • www.railgolf.com	18: 72 / 6,583 / 71.7 / 127	Sangamon Ryan Matrisch
Red Tail Run 520 W. Grove Rd., Decatur • (217) 422-2211 • www.redtailrun.org	18: 72 / 7,351 / 74.4 / 132	Macon
Rogala Public Links 1322 State Hwy. 16, Mattoon • (217) 235-5518 • http://rogalagolf.com/Home_Page_S165.html	18: 35 / 3,069 / 37.3 / unsloped	Coles
Scovill 3909 W. Main St., Decatur • (217) 429-6243 • http://www.decatour-parks.org/golf/scovill-golf-club	18: 71 / 5,925 / 68.4 / 119	Macon
Shambolee 442 S Shore Dr., Petersburg • (217) 632-2140 • http://www.golfshambolee.com	18: 72 / 6,748 / 72.1 / 119	Menard
Timberlake 957 CR 700E, Sullivan • (217) 797-6496 • http://timberlakegolfcourse.com	9: 35 / 3,045 / 34.7 / 112	Moultrie
Turtle Run 332 E. Liberty Ln., Danville • (217) 422-8876 • www.turtleungolfclub.com	18: 72 / 6,771 / 72.1 / 127	Vermilion
Univ. of Illinois 800 Hartwell Dr., Savoy • (217) 359-5613 • www.uoigolf.com	Orange 18: 72 / 6,896 / 72.9 / 130 Blue 18: 72 / 6,479 / 70.2 / 119	Champaign Michael Wallner
Willow Pond 808 Golf Course Rd., Rantoul • (217) 893-9000 • http://www.willowpondgolf.com	18: 72 / 6,799 / 71.8 / 115	Champaign
Wolf Creek 2521 Perrysville Rd., Danville • (217) 446-1025 • www.wolfcreekknine.com	9: 35 / 3,120 / unrated	Vermilion

Woodlawn 905 E. Richardson St., Farmer City • (309) 928-3215 • www.woodlawncountryclubfc.com	9: 36 / 3,117 / 69.0 / 117	DeWitt
GREATER METRO EAST GRANITE CITY TO CARLYLE		
Acorns 3933 Ahne Rd., Waterloo • (618) 939-7800 • www.acornsgolfinks.com	18: 72 / 6,701 / 72.7 / 135	Monroe
American Legion Post Ill. Rt. 157, Edwardsville • (618) 656-9774 • www.edwardsvillelegion.com/golf-course.html	9: 35 / 2,652 / unrated	Madison
Annbrar 1524 Birdie Ln., Waterloo • (888) 939-5191 • www.annbrar.com	18: 72 / 6,863 / 72.8 / 136	Monroe
Arlington Greens 200 Arlington Dr., Granite City • (618) 931-5232 • www.arlingtongreens.com	18: 72 / 6,907 / 72.4 / 125	Madison
Barkau Memorial 1501 N Waterworks Rd., Okawville • (618) 243-6610 • www.rbmjgolf.com	18: 71 / 6,513 / 70.9 / 128	Washington
Belk Park 880 Belk Park Rd., Wood River • (618) 251-3115 • http://belkpark.com	18: 72 / 6,812 / 71.5 / 121	Madison
Bent Oak 1725 S. Broadway, Breese • (618) 526-8181 • http://breese.org/golf-course/	18: 36 / 3,290 / unrated	Clinton
The Bridges 1655 Columbia Bridges Rd., Columbia • (618) 281-3900 • http://columbiagolfclub.net	18: 72 / 6,998 / 73.0 / 125	Monroe
Carlyle Lake 11777 Ill. Rt. 127, Carlyle • (618) 594-2758 • http://carlylelake.com/golf	18: 36 / 3,309 / 35.4 / 124	Clinton
Cloverleaf 3555 Fosterburg Rd., Alton • (618) 462-3022 • www.cloverleafgolfcourse.com	18: 70 / 5,514 / 64.2 / 108	Madison
Columbia 125 Aa Rd., Columbia • (618) 286-4455 • http://columbiagolfclub.net	18: 71 / 5,970 / 67.6 / 113	Monroe
Elmwood 1400 Eiler Rd., Belleville • (618) 538-5826 • www.golffatelmwood.com	18: 36 / 2,931 / unrated	St. Clair
Fox Creek 6555 Fox Creek Dr., Edwardsville • (618) 692-9400 • www.golffoxcreek.com	18: 72 / 7,027 / 74.9 / 144	Madison
Fairfield 1900 Columbia Quarry Rd., Columbia • (618) 847-7222 • www.fairfieldgolfclub.com	18: 71 / 5,864 / 66.2 / 110	Monroe
Gateway National 18 Golf Dr., Madison • (618) 482-4653 • www.gatewaynational.com	18: 71 / 7,178 / 75.0 / 138	St. Clair
Governor's Run 3300 Governors Dr., Carlyle • (618) 594-4585 • www.governorsrun.com	18: 72 / 7,013 / 73.9 / 131	Clinton
Grand Marais 5802 Lake Dr., East Saint Louis • (618) 398-9999 • www.grandmaraisgolf.com	18: 72 / 6,998 / 71.9 / 129	St. Clair
Granite City Legacy 3500 Cargill Rd., Granite City • (618) 931-4653 • www.thelegacygolfcourse.com	18: 71 / 6,327 / 70.4 / 114	Madison
Indian Mounds 3500 Kingshighway, Fairmont City • (618) 271-4000 • www.indianmoundsgolfcourse.com	18: 59 / 3,381 / unrated	St. Clair
Indian Springs 21347 Ill. Rt. 185, Fillmore • (217) 538-2392 • www.indianspringsgolf.net	18: 70 / 6,148 / 68.9 / 122	Montgomery
Lone Oak Off Hwy. 108, Carrollton • (217) 942-6166 • <i>no website</i>	9: 32 / 2,150 / unrated	Greene

Nashville 660 E Memorial Dr., Nashville • (618) 327-3821 • https://m.facebook.com/NashMGC/	18: 36 / 6,214 / 70.0 / 124	Washington
Oak Brook 9157 Fruit Rd., Edwardsville • (618) 656-5600 • http://oakbrookgc.com	East 9: 36 / 3,195 (71 / 6,231 with West) North 9: 36 / 3,605 (71 / 6,641 with West) West 9: 35 / 3,036 / 71.5 / 118	Madison
Oak Leaf 186898 Oak Leaf Country Club Rd., Girard • (618) 627-3015 • www.oakleafcc.com	9: 32 / 2,236 / 60.6 / 98	Macoupin
The Orchards 1499 Golf Course Dr., Belleville • (618) 233-8921 • www.orchardsgolfclub.com	18: 71 / 6,787 / 72.2 / 126	St. Clair
The Prairies 300 Tricentennial Ct., Cahokia • (618) 332-6944 • www.prairiesgc.com	18: 71 / 6,490 / 72.0 / 127	St. Clair
Mystic Oak (Ridge) 643 Ridge Rd., Waterloo • (618) 939-4646 • www.mysticoakgolf.com	18: 72 / 6,358 / 70.6 / 125	Monroe
River Lakes 2218 Ramsey Rd., Columbia • (618) 281-6665 • www.riverlakesgolfcourse.com	18: 71 / 5,478 / 65.7 / 100	Monroe
Rock Spring 2116 College Ave., Alton • (618) 465-9898 • www.rockspringgolfcourse.com	9: 35 / 3,015 / unrated	Madison
Rolling Hills 5801 Pierce Ln., Godfrey • (877) 610-1416 • www.rollinghillsgc.com	18: 71 / 5,687 / 66.1 / 100 Executive 9: 29 / 1,927 / unrated	Madison
Spencer T. Olin 4701 College Ave., Alton • (618) 465-3111 • http://spencerolingo.com	18: 72 / 6,941 / 73.5 / 135 Executive 9:	Madison Adam Rockey
Shoal Creek 505 Northwest St., Raymond • (217) 229-4545 • https://m.facebook.com/ShoalCreekGolfCourse	9: 35 / 3,172 / 35.0 / 115	Montgomery
Stonewolf 1195 Stonewolf Trl., Fairview Heights • (618) 624-4653 • http://stonewolfgolf.com	18: 72 / 6,943 / 73.5 / 137	St. Clair
Tamarack 800 Tamarack Ln., Shiloh • (618) 623-6666 • www.golfattamarack.com	18: 71 / 6,282 / 69.8 / 120	St. Clair
Terry Park 30565 Terry Park Rd., Palmyra • (217) 436-2531 • www.terryparkgc.com	18: 35 / 2,814 / 66.4 / 100	Macoupin
Timber Lakes 3120 Forest Lake Ln., Staunton • (618) 635-4653 • http://timberlakesgolfcourse.com	18: 72 / 6,960 / 72.5 / 128	Macoupin
Triple Lakes 6942 Triple Lakes Rd., Millstadt • (618) 476-9985 • http://triplelakesgolfcourse.com	18: 72 / 6,227 / 69.1 / 112	St. Clair
Twin Oaks 21900 Ill. Rt. 127, Greenville • (618) 749-5611 • www.twinoaksgolf.net	18: 36 / 3,190 / unrated	Bond
White Oak 545 Rec Area Rd., Marissa • (618) 295-2889 https://m.facebook.com/White-Oak-Golf-Course-319603801501647/	18: 36 / 3,067 / 67.1 / 109	St. Clair
Wolves Crossing 23745 N. Centennial Rd., Jerseyville • (618) 498-3178 • http://golfngm.com/wolves-crossing	18: 71 / 6,028 / 67.3 / 107	Jersey
The Woodlands 2839 Harris Ln., Alton • (618) 462-1456 • http://golfngm.com/the-woodlands/	18: 72 / 6,418 / 70.6 / 123	Madison
Yorktown 300 Goalby Dr., Belleville • (618) 233-2000 http://shilohil.org/parks-recreation/yorktown-golf-course	18: 54 / 2,146 / unrated	St. Clair

Tell them you saw the course listing in Illinois Golfer

SOUTH EFFINGHAM TO CAIRO

Cardinal 15737 N. Beach Rd., Effingham • (217) 868-2860 www.sites.google.com/site/cardinalgolfcourse	18: 72 / 6,025 / 67.4 / 108	Effingham
Carmi 883 Country Club Rd. N. 1350, Carmi • (618) 384-5011 • www.carmacountryclub.com	9: 36 / 2,978 / 65.1 / 99	White
Chester 1310 Lehmen Dr., Chester • (618) 826-3168 • www.chestercountryclub.com	18: 36 / 3,598 / 36.0 / 120	Randolph
Colonial 3449 Old Rt. 51 S., Sandoval • (618) 247-3307 • www.sandovalcolonialgolf.com	18: 70 / 5,667 / 65.1 / 102	Marion
Crab Orchard 901 W. Grand Ave., Carterville • (618) 985-2321 • www.craborchardgolfclub.com	18: 70 / 6,420 / 71.0 / 129	Williamson
Crooked Creek 8250 E. Seven Oaks Rd., Mount Vernon • (618) 735-2445 Opened 1994	18: 70 / 5,454 / 64.6 / 111	Jefferson Closed aft 2011
Deer Run / Heath Mem. Washington Park, Robinson • (618) 544-2350 • http://cityofrobinson.com/parks-recreation/	9: 27 / 1,071 / 33.0 / 113	Crawford
East Fork Par 3 5636 E. Branchwood Ln., Olney • (618) 395-3505 • http://eastforkgolf.com	9: 27 / 858 / unrated	Richland
Egyptian 4880 US Hwy. 51, Mounds • (618) 745-6412 • www.egyptiancountryclub.com	9: 36 / 3,042 / unrated	Pulaski
Fairfield 701 NW 9th St., Fairfield • (618) 847-7222 • www.waynecountygolf.com	18: 70 / 5,906 / unrated	Wayne
Flying M Ranch 6003 Mathis Rd., Centralia • (618) 532-8602 • <i>no website</i>	9: 32 / 2,040 / 32.0 / 113	Marion
Flora Old Highway 50, Flora • (618) 662-2500 https://m.facebook.com/Flora-Golf-and-Country-Club-165520246866770/	9: 35 / 3,054 / 36.0 / 113	Clay
Fore-Way 16041 N. 1000th St., Effingham • (217) 868-5418 • www.forewaygolfcourse.com	9: 36 / 2,910 / unrated	Effingham
The Gambit 1550 Ill. Rt. 146 E., Vienna • (618) 658-6022 • www.gambitgolf.com Closed since 2015, status in limbo	18: 71 / 6,546 / 72.4 / 137	Johnson
Green Hills 3800 E. Fairfield Rd., Mount Vernon • (618) 244-3961 • www.greenhillsgolfclub.net	18: 71 / 6,490 / 72.2 / 127	Jefferson
Greenview 2801 Putter Dr., Centralia • (618) 532-7395 • www.greenviewgolfclub.com	18: 70 / 6,150 / 68.5 / 107	Marion
Hardin County (TTI) RR 1, Cave In Rock • (618) 289-4587 • www.hardincountygolfcourse.com	9: 36 / 2,657 / unrated	Hardin
Hickory Ridge 2727 W. Glenn Rd., Carbondale • (618) 529-4386 • www.cpkd.org	18: 72 / 6,863 / 73.3 / 137	Jackson Michael Day
Indian Hills 20 Indian Trail Dr., Mount Vernon • (618) 244-9697 www.facebook.com/Indian-Hills-Golf-Course-Mt-Vernon-IL-175249045826863/	18: 72 / 6,022 / 66.0 / 99	Jefferson
Jackson 5776 Country Club Rd., Murphysboro • (618) 684-2387 • www.jacksoncc.com	18: 71 / 6,034 / 69.0 / 124	Jackson
Links at Kokopelli 1527 Champions Dr., Marion • (618) 997-5656 • www.kokopelligolf.com	18: 71 / 7,039 / 74.7 / 139	Williamson

McLeansboro Golf Course Rd., McLeansboro • (618) 643-2400 • www.mclgolf.org	9: 36 / 3,228 / 70.0 / 112	Hamilton
Mount Carmel Municipal 700 Park Rd., Mount Carmel • (618) 262-5771 • www.mtcarmelgolfcourse.com	18: 71 / 6,121 / 69.2 / 123	Wabash
North County 703 W. Market St., Red Bud • (618) 282-6590 • http://ncclub.weebly.com	9: 35 / 2,842 / unrated	Randolph
Oak Glen 11234 N. 600th St., Robinson • (618) 592-3030 • www.golfoakglen.com	18: 71 / 6,086 / 67.7 / 112	Crawford
Pine Lakes 2705 S. Park Ave., Herrin • (618) 942-6816 • www.pinelakes18.com	18: 71 / 6,003 / 68.9 / 123	Williamson
Pyramid Oaks 5500 Ill. Rt. 4 S., Percy • (618) 497-8484 • www.pyramidoaks.com (website inactive)	9: 36 / 3,100 / 69.9 / 126	Randolph
Ramsey Lake RR 1 Box 221, Ramsey • (618) 423-2261 • <i>no website</i>	9: 35 / 2,750 / 62.0 / 103	Fayette
Red Hawk 6204 Ill. Rt. 154, Tamaroa • (618) 357-8712 • http://redhawkgc.net	18: 70 / 6,273 / 70.5 / 133	Perry
Rend Lake 12575 Golf Course Dr., Whittington • (618) 629-2353 • www.rendlakegolfresort.com	East-West 18: 36 / 6,812 / 71.8 / 131 South 9: 36 / 3,442 /	Franklin
Saint Elmo 1 mi. NW of Saint Elmo, Saint Elmo • (618) 829-3390 • www.stelmogolfclub.com	9: 36 / 3,220 / 35.3 / 126	Fayette
Saline County 355 Golf Course Rd., Eldorado • (618) 273-9002 • <i>no website</i>	18: 70 / 5,975 / 66.9 / 108	Saline
Shawnee Hills 1110 Shawnee Hills Rd., Harrisburg • (618) 253-7294 • https://www.facebook.com/playgolffhere/	9: 36 / 2,948 / 35.1 / 128	Saline
Sparta 19 Fairway Dr., Sparta • (618) 443-4911 • <i>no website</i>	18: 35 / 2,981 / 32.7 / 101	Randolph
Stardust 14756 Stardust Rd., Johnston City • (618) 983-8822 https://m.facebook.com/StardustGolfCourse/	9: 36 / 2,972 / 35.0 / 129	Williamson
Stone Creek 503 Stone Creek Dr., Makanda • (618) 457-5455 • www.stonecreekgolf.com	18: 72 / 6,875 / 74.0 / 140	Jackson
Union County 430 E. Jefferson St., Anna • (618) 833-7912 • www.uccgolf.com	18: 71 / 6,613 / 71.4 / 132	Saline
Vandalia 1110 S. 8th St., Vandalia • (618) 283-1365 • <i>no website</i>	9: 35 / 2,782 / 34.6 / 113	Fayette

INDIANA OUTLYING

Aberdeen 245 Tower Rd., Valparaiso • (219) 462-5050 • www.golftaberdeen.com	18: 72 / 6,917 / 73.0 / 134	Mike Higdon
Beechwood 2222 Woodlawn Dr., LaPorte • (219) 362-2651 • www.thebeachwoodgolfcourse.com	18: 72 / 6,657 / 72.8 / 129	
Birch Boilermaker Kampen 1300 Cherry Ln., West Lafayette • (765) 494-3139 • www.purduegolf.com	18: 72 / 7,253 / 76.5 / 145 Ackerman 18: 71 / 6,436 / 70.3 / 124	
Blackthorn 6100 Nimitz Pkwy., South Bend • (574) 232-4653 • www.blackthornogolf.com	18: 72 / 7,105 / 75.2 / 135	Rich Love

Briar Leaf 18: 72 / 6,850 / 73.2 / 132
3233 N. State Rd., LaPorte • (219) 326-1992 • www.briarleaf.com Jay Williams

Brickyard Crossing 18: 72 / 6,994 / 74.5 / 137
4400 W. 16th St., Speedway • (317) 484-6572 • www.brickyardcrossing.com Jeff Schroeder

Creekside Glen 9: 36 / 3,270 / 36.0 / 125
Meadows 3:
2335 Clifford Rd., Valparaiso • (219) 531-7888 • www.creeksidegolfcourse.com

Curtis Creek 18: 72 / 6,284 / 70.6 / 117
5385 S. 1080 W., Rensselaer (east of) • (219) 866-7729 • www.curtiscreekcountryclub.com

Duck Creek 18: 70 / 5,338 / 70.0 / 113
636 N. 700 W., Hobart • (219) 759-5870 • www.duckcreekgolfcourse.com Ken Habhan (GM)

Elbel Park 18: 70 / 6,885 / 70.7 / 113
26595 Auten Rd., South Bend • (574) 271-9180 • www.sbparkgolf.org/elbel/

Erskine Park 18: 70 / 6,098 / 68.5 / 120
4200 Miami Rd., South Bend • (574) 291-3216 • www.sbparkgolf.org/erskine/

Forest Park 18: 70 / 5,642 / 67.2 / 114
1155 Sheffield Dr., Valparaiso • (219) 531-7888 • www.forestparkgolfcourse.com

The Fort 18: 72 / 7,148 / 74.4 / 139
5200 N. Post Rd., Indianapolis • (317) 543-9597 • www.thefortgolfcourse.com

French Lick Resort Ross 18: 70 / 7,030 / 72.3 / 135
Dye 18: 72 / 8,102 / 80.0 / 148
Valley Links Bendelow 9: 36 / 3,478 /
8670 W. State Rd. 56, French Lick • (888) 936-9360 • www.frenchlick.com

Harrison Hills 18: 72 / 6,820 / 72.6 / 131
413 E. New St., Attica • (765) 762-1135 • www.harrisonhills.com Geoff Curtis (GM)

Hazelden 18: 70 / 5,137 / 68.4 / 111
3705 E. Ind. 16 • (219) 275-7771 • www.hazeldencountryclub.com

Hulman Links 18: 72 / 7,225 / 74.9 / 144
990 N. Chamberlain St., Terre Haute • (812) 877-2096 • www.hulmanlinks.com David Kennedy

Legacy Hills 18: 72 / 6,600 / unrated
299 W. Johnson Rd., LaPorte • (219) 324-4777
https://m.facebook.com/Legacy-Hills-Golf-Club-Inc-113554758679199/

LuGene Links 9: 36 / 3,200 / 34.9 / 112
8687 N 300 W, Lake Village • (219) 992-3337 • no website Gene Berry

Michigan City South 18: 72 / 6,169 / 68.7 / 113
North 18: 60 / 3,531 / 58.2 / 90
4000 E. Michigan Blvd., Michigan City • (219) 873-1516 • www.michigancitygolfcourse.com

Mink Lake 9: 35 / 3,000 / 33.5 / 102
636 N. Calumet Ave., Valparaiso • (219) 462-2585 • no website

Notre Dame Burke 9: 35 / 3,211 / 35.5 / 116
US 933 at Dorr Rd. (east) • (574) 631-6425 • http://burkegolfcourse.nd.edu/ John Foster

Notre Dame Warren 18: 71 / 7,020 / 74.6 / 135
110 Warren Golf Course, Notre Dame • (574) 631-4653 • www.warengolfcourse.com John Foster

Robbinhurst 18: 68 / 5,629 / 66.5 / 111
383 W. County Rd. 875 N., Portage • (219) 762-9711 • www.robbinhurst.com Andrew Elderkin

Sandy Pines 18: 72 / 6,801 / 72.2 / 135
10527 Bunker Dr., DeMotte • (877) 987-3611 • www.sandypinesgc.com Brad Burvan

Studebaker 9: 29 / 1,898 / unrated
718 E. Calvert St., South Bend • (574) 287-6634 • www.sbparkgolf.org/studebaker/

Swan Lake Black 18: 72 / 7,112 / 74.2 / 129
Silver 18: 72 / 6,825 / 72.0 / 126
5203 Plymouth Tr., Plymouth • (800) 935-5545 • http://swanlakeresort.com

Trophy Club 18: 72 / 7,317 / 75.3 / 138
3875 N. State Rd. 52, Lebanon • (765) 482-7272 • www.thetrophyclubgolf.com B.G. Winings

WISCONSIN

Abbey Springs 18: 72 / 6,466 / 71.4 / 133
1 Country Club Dr., Fontana • (262) 275-6113 • www.abbeysprings.com Jerry Mortier (GM)

Big Oaks 18: 72 / 5,848 / unrated
9: 36 / 2,962 / unrated
6117 123rd Pl., Pleasant Prairie • (262) 694-4200 • www.bigoaksgolf.com Jose Reyes

Blackwolf Run River 18: 72 / 7,404 / 76.2 / 151
Meadow Valleys 18: 72 / 7,250 / 75.1 / 145
1111 W. Riverside Dr., Kohler • (866) 847-4856 • www.destinationkohler.com

The Bog 18: 72 / 7,110 / 74.9 / 142
3121 County Hwy. 1, Saukville • (800) 484-3264 • www.golfthebog.com

Brighton Dale Links Blue Spruce 18: 72 / 6,687 / 72.0 / 129
Red Pine 18: 72 / 7,024 / 72.9 / 132
White Birch 18: 72 / 6,977 / 73.3 / 130
830 248th Ave., Kansasville • (262) 878-1440 • www.co.kenosha.wi.us/publicworks/golf

Bristol Oaks 18: 72 / 6,319 / 70.1 / 120
16801 75th St., Bristol • (262) 857-2302 • www.bristolinks.com Frank Blum (GM)

Brown Deer Park 18: 71 / 6,716 / 72.6 / 132
7625 N. Range Line Rd., Milwaukee • (414) 352-8080 • http://milwaukeecountygolfcourses.com

Country Club Estates 9: 35 / 3,011 / 32.3 / 121
365 Pottawatomi Dr., Fontana • (262) 275-3705 • www.countryclubestatesgolf.com

Delbrook North 9: 35 / 3,183 / ratings
Middle 9: 36 / 3,326 / combine
South 9: 36 / 3,266 / on 9s
700 S. 2nd St., Delavan • (262) 728-3966 • www.delbrookgc.com Dan Piecha

Erin Hills 18: 72 / 7,820 / 77.9 / 145
7169 County Rd. O, Erin • (866) 772-4769, (262) 670-8600 • www.erinhills.com Rich Tock

Geneva National Palmer 18: 72 / 7,171 / 74.8 / 140
Trevino 18: 72 / 7,120 / 74.5 / 137
Player 18: 72 / 7,039 / 74.4 / 138
1221 Geneva National Ave. South, Lake Geneva • (262) 245-7000
www.genevanationalresort.com David Winget

Grand Geneva Brute 18: 72 / 6,997 / 73.8 / 136
Highlands 18: 71 / 6,167 / 71.9 / 131
7036 Grand Geneva Way, Lake Geneva • (262) 248-8811 • www.grandgeneva.com

Hawk's View Como Crossing 18: 72 / 7,032 / 73.1 / 133
Barn's Hollow 18: 54 / 2,708 / unrated
7377 Krueger Rd., Lake Geneva • (262) 348-9900 • www.hawksviewgolfclub.com

Johnson Park 18: 72 / 6,703 / 71.5 / 124
6200 Northwestern Ave., Racine • (262) 637-5068 • www.racinegolfonline.com

Lake Lawn Resort 18: 70 / 6,418 / 69.2 / 120
2400 E. Geneva St., Delavan • (262) 728-2347 • www.lakelawnresort.com Jeff Selgren

Lawsonia Links 18: 72 / 6,853 / 72.8 / 130
Woodlands 18: 72 / 6,618 / 72.7 / 132
W2615 S. Valley View Dr., Green Lake • (920) 294-3320 • www.lawsonia.com Jeff Kleinke

Nippersink Resort 18: 71 / 6,652 / 69.9 / 119
N1055 Tombeau Rd., Genoa City • (262) 279-6311 • www.nippersinkresort.com Tracy Heim

Petrifying Springs 18: 70 / 5,979 / 67.8 / 119
4909 7th St., Kenosha • (262) 552-9052 • www.co.kenosha.wi.us/publicworks.golf Chris Adams

Sand Valley SV 18: 72 / 6,909 / 72.6 / 128
Mammoth Dunes 18: 72 / 6,935 / 72.4 / 132
The Sandbox 17: 51 / 1,652 / no rating
1697 Leopold Way, Nekoosa • (888) 651-5539 • www.sandvalleygolfresort.com

Sentryworld 18: 72 / 7,145 / 74.7 / 139
601 N. Michigan Ave., Stevens Point • (866) 479-6753 • www.sentryworld.com

Shoop Park 9: 34 / 2,631 / 35.5 / 113
4510 Lighthouse Dr., Racine • (262) 681-9714 • www.racinegolfonline.com

Spring Valley 18: 70 / 6,354 / 70.1 / 119
23913 Wilmot Rd., Salem • (262) 862-2626 • www.springvalleyccsalem.com John Wagner

Twin Lakes 18: 70 / 5,930 / 67.5 / 116
1230 Legion Dr., Twin Lakes • (262) 877-2500 • www.tlccgolf.com Chad Cantwell

University Ridge 18: 72 / 6,888 / 73.2 / 142
9002 County Rd. PD, Verona • (800) 897-4343 • www.universityridge.com Mike Gaspard

Washington Park 9: 35 / 2,759 / unrated
2801 12th St., Racine • (262) 635-0118 • www.racinegolfonline.com

Whistling Straits Straits 18: 72 / 7,790 / 77.2 / 152
Irish 18: 72 / 7,201 / 75.6 / 146
N8501 Hwy. LS, Haven • (800) 618-5535 • www.destinationkohler.com

MICHIGAN

Angels Crossing 18: 72 / 7,169 / 74.3 / 135
3600 E. West (Schoolcraft) Ave., Vicksburg • (269) 694-2700 • www.golfangelscrossing.com

Arcadia Bluffs Bluffs 18: 72 / 7,300 / 75.7 / 146
South 18: 72 / 7,412 / 75.6 / 132
14710 Northwood Hwy., Arcadia • (800) 494-8666 • https://arcadiabluffs.com

Bay Harbor Preserve / Links 18: 71 / 6,784 / 72.9 / 142
Quarry 9: 36 / 3,341 / 73.0 / 145 (Links to Quarry)
5800 Coastal Ridge Dr., Bay Harbor • (231) 439-4085 • www.bayharbortgolf.com

Belvedere 18: 72 / 6,943 / 73.7 / 134
5371 Marion Center Rd., Charlevoix • (866) 547-2611 • www.belvederegolfclub.com

Black Lake 18: 72 / 7,035 / 74.8 / 143
2800 Maxon Rd., Onaway • (989) 733-4653 • www.blacklakegolf.com

Boyer Highlands / A. Hills 18: 72 / 7,339 / 75.4 / 144
Donald Ross 18: 72 / 6,816 / 73.9 / 143
Heather 18: 72 / 7,143 / 75.4 / 147
Moor 18: 72 / 6,850 / 73.5 / 144
600 Highlands Dr., Harbor Springs • (231) 526-3029 • www.boyerhighlands.com

Boyer Mountain / Alpine 18: 72 / 7,056 / 73.3 / 138
Monument 18: 72 / 7,003 / 73.6 / 137
1 Boyer Mountain Rd., Boyer Falls • (231) 549-6028 • www.boyergolf.com

Eagle Eye 18: 72 / 7,323 / 75.9 / 145
15500 Chandler Rd., Bath • (517) 903-8064 • www.hawkhollow.com/eagle-eye-golf-course/

Forest Dunes 18: 72 / 7,116 / 75.2 / 146
 Loop / Red 18: 70 / 6,786 / to be rated – counterclockwise routing
 Loop / Black 18: 70 / 6,861 / to be rated – clockwise routing
 6376 Forest Dunes Dr., Roscommon • (989) 275-0700 • www.forestdunesgolf.com

Grand Beach 9: 36 / 2,955 / 68.6 / 122
 Grand Beach • (269) 469-4888 • www.grandbeach.org/pro_shop.html

Grand Traverse Bear 18: 72 / 7,078 / 76.3 / 148
 Wolverine 18: 72 / 7,043 / 71.1 / 138
 Spruce Run 18: 70 / 6,304 / 71.1 / 134
 100 Grand Traverse Village Blvd., Acme • (231) 534-6000
<https://www.grandtraverseresort.com>

Marquette Heritage 18: 71 / 6,260 / 70.0 / 124
 Greywalls 18: 71 / 6,828 / 73.0 / 144
 1075 Grove St., Marquette • (906) 225-0721 • www.marquettégolfclub.com

Harbor Shores 18: 72 / 6,861 / 71.7 / 143
 201 Graham Ave., Benton Harbor • (269) 927-4653 • www.harborshoresgolf.com Ross Smith (GM)

HawksHead 18: 72 / 7,003 / 72.8 / 129
 523 HawksNest Dr., South Haven • (269) 639-2121 • www.hawksheadlinks.com Larry Tebelak

Lake Michigan Hills 18: 72 / 6,911 / 73.9 / 135
 2520 Kerlikowske Rd., Benton Harbor • (269) 849-4653 • www.lakemichiganhills.com

Lochenheath 18: 72 / 7,280 / 77.2 / 148
 7951 Turnberry Cir., Williamsburg • (231) 938-9800 • www.lochenheath.com

Pilgrim's Run 18: 73 / 7,093 / 74.4 / 143
 11401 Newcosta Ave., Pierson • (888) 533-7742 • www.pilgrimsrun.com

Timberstone 18: 72 / 6,938 / 74.5 / 150
 N. 3332 Pine Mountain Rd., Iron Mountain • (906) 776-0111 • www.pinemountainresort.com

Otsego Classic 18: 72 / 6,267 / 69.8 / 121
 Tribute 18: 72 / 7,155 / 74.1 / 134
 696 M-32 East, Gaylord • (800) 752-5510 • www.otsegoclub.com

St. Ives 18: 72 / 6,702 / 73.1 / 146
 9900 St. Ives Dr., Stanwood • (800) 972-4837 • www.tullymoregolf.com

Tullymore 18: 72 / 7,250 / 76.0 / 150
 11969 Tullymore Dr., Stanwood • (800) 972-4837 • www.tullymoregolf.com

Whittaker Woods 18: 72 / 7,071 / 74.3 / 144
 12578 Wilson Rd., New Buffalo • (269) 469-3400 • www.golfwhittaker.com Steve Dell

Illinois Golfer lists more facilities (591) and individual courses (636) than any other publication in the state!

CHICAGOLAND RANGES

STAND-ALONE OUTDOOR FACILITIES / INDOOR DOMES

BallyBunion 4200 Rt. 83, Long Grove (847) 634-3363
Bartlett Golf Center 1301 W. Lake St., Bartlett (847) 830-9385
Better Shots 825 Tyrell Rd., Gilberts (847) 697-5000
Birdies & Eagles 800 McDonald Rd., South Elgin (847) 931-2233
Bobby's Hunt Club 491 S. Hunt Club Rd., Gurnee (847) 549-6090
Boulder Golf Range 2900 Beverly Rd., Hoffman Estates (847) 426-1588
Buffalo Grove Sports Center

801 McHenry Rd., Buffalo Grove (847) 353-7575
 30 W. Madison St., Maywood (708) 344-2700
Central Park Range 5799 Central Ave., Portage, Ind. (219) 762-4653
Crete Family Fun Center 955 Main St., Crete (708) 672-7991
Deer Run Family Golf 11007 Rt. 120, Woodstock (815) 338-9701
Diversey Driving Range 141 W. Diversey Pkwy., Chicago (312) 742-7929
Douglas Park Learning 1401 S. Sacramento Ave., Chicago (312) 747-7670
Fore Seasons 4418 Buhl Rd., Crystal Lake (815) 444-8100
Golf Farm 2100 N. Rt. 12, Wauconda (847) 526-4000
Green Garden Golf Dome 9511 W. Monee-Manhattan Rd., Frankfort (815) 469-3350
Green Valley Golf 26W101 Lake St., Hanover Park (630) 289-6600
Golf Learning Center Hamilton Lakes

500 Park Blvd., Itasca (630) 773-7997
 1150 E. Golf Rd., Des Plaines (847) 296-5764
Highland Park Learning 2205 Skokie Valley Rd., Highland Park (847) 433-3422
Lippold Park 1 E. Crystal Lake Ave., Crystal Lake (815) 459-0680
Master Golf 425 S. Rt. 45, Grayslake (847) 223-6886
Mid Iron (and 3 holes) 12680 S. Bell Rd., Palos Park (630) 257-3340
Mistwood Golf Dome 730 N. Bolingbrook Dr., Bolingbrook (630) 739-7600
Oakton Range 2800 W. Oakton Ave., Park Ridge (847) 692-3580
Paradise Golf Supply 1500 N. Main St., Crown Point, Ind. (219) 313-6769
Perfection Park 6215 S. Bridge St., Yorkville (630) 553-6855
Partner Golf Center 6615 W. Irving Park Rd., Chicago (773) 286-2060
Pro Circle 1810 Rt. 12, Spring Grove (815) 675-2747
Riedy's Tee Time 1400 Maple Ave., Lisle (630) 852-5759
Skokie Sports Park (847) 674-1500
 100 Business Rt. 30, Aurora (630) 820-8624
Sports Zone Family Fun (630) 466-3866
Sugar Grove Family Fun (847) 394-5865
Sunset Meadows Range 811 S. Dwyer Ave., Arlington Heights (708) 301-6500
T-Time Golf 13750 W. 159th St., Homer Glen (630) 596-1000
Top Golf 3211 Odyssey Ct., Naperville (630) 595-4653
Top Golf 699 W. Thorndale Ave., Wood Dale (630) 595-4653
Westland Golf 11900 Algonquin Rd., Huntley (847) 669-0204
Woodland Trails 1500 E. Euclid Ave., Mount Prospect (847) 296-4563

TOUR GUIDE



Kevin Strelman 61st WGR
 \$1,065,924 in 18 starts 74th FEC
 Best: T3 Safeway Open
 70.523 scoring average



Doug Ghim 221st WGR
 \$968,138 in 16 starts 70th FEC
 Best: T5 American Express / Hope
 70.579 scoring average



Luke Donald 614th WGR
 \$30,710 in 14 starts 218th FEC
 Best: T40 Bermuda
 72.323 scoring average



Nick Hardy **KF Tour**
 \$372,569 in 30 starts* 18th KFT
 Best: T3 Bahamas / T14 Sony Open
 69.27 scoring average *PGA/KFT



Brad Hopfinger **KF Tour**
 \$172,858 in 24 starts 36th KFT
 Best: T3 Wichita
 69.84 scoring average



Vince India **KF Tour**
 \$138,766 in 27 starts 64th KFT
 Best: T3 Tour Championship
 70.28 scoring average



Scott Langley **KF Tour**
 \$46,565 in 25 starts 121st KFT
 Best: T15 Panama
 70.95 scoring average

Through Zurich Classic; WGR: World Golf Ranking; FEC: FedEx Cup

IN MAY

The Illinois PGA Match Play Championship
 Evans Scholar Invitational Preview
 Radix Cup Preview
 More!

Follow Illinois Golfer on Twitter: @illinoisgolfer